

## Anti-Protein orai-2 ORAI2 Antibody

Catalog Number: A07411

### About ORAI2

Antigen stimulation of immune cells triggers Ca<sup>++</sup> entry through Ca<sup>++</sup> release-activated Ca<sup>++</sup> (CRAC) channels. ORAI2 is one of two mammalian homologs to ORAI1, a recently identified four-transmembrane spanning protein that is an essential component of CRAC. Like ORAI1, ORAI2 has been shown to function as a highly selective Ca<sup>++</sup> plasma membrane channel that is gated through interactions with STIM1, the store-activated endoplasmic reticulum Ca<sup>++</sup> sensor, although at a lesser efficacy than ORAI1.

### Overview

Product Name	Anti-Protein orai-2 ORAI2 Antibody
Reactive Species	Human, Mouse
Description	Boster Bio Anti-Protein orai-2 ORAI2 Antibody (Catalog # A07411). Tested in ELISA, WB, ICC, IF applications. This antibody reacts with Human, Mouse.
Application	ELISA, IF, ICC, WB
Clonality	Polyclonal
Formulation	ORAI2 Antibody is supplied in PBS containing 0.02% sodium azide.
Storage Instructions	ORAI2 antibody can be stored at 4°C for three months and -20°C, stable for up to one year. Avoid repeated freeze-thaw cycles. Antibodies should not be exposed to prolonged high temperatures.
Host	Rabbit
Uniprot ID	Q96SN7

### Technical Details

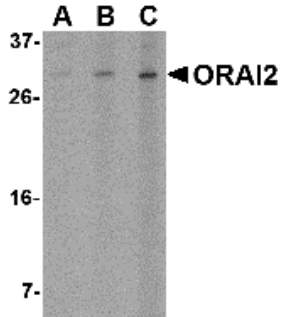
Immunogen	ORAI2 antibody was raised against a 15 amino acid synthetic peptide from near the carboxy terminus of human ORAI2. The immunogen is located within the last 50 amino acids of ORAI2.
Predicted Reactive Species	Chicken
Cross Reactivity	At least two isoforms of ORAI2 are known to exist; this antibody will detect both isoforms. ORAI antibody is predicted not to cross-react with ORAI1 or ORAI3.
Isotype	IgG
Form	Liquid
Concentration	1 mg/mL
Purification	ORAI2 Antibody is affinity chromatography purified via peptide column.

Suggested Dilutions

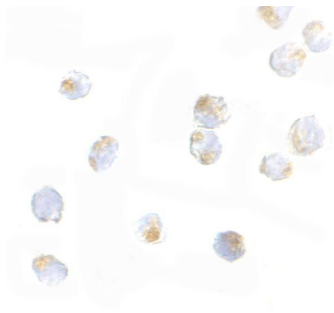
ORAI2 antibody can be used for detection of ORAI2 by Western blot at 1 - 4 ug/mL. Antibody can also be used for immunocytochemistry starting at 5 ug/mL. For immunofluorescence start at 20 ug/mL.

Antibody validated: Western Blot in human samples; Immunocytochemistry in human samples and Immunofluorescence in human samples. All other applications and species not yet tested. Optimal dilutions for each application should be determined by the researcher.

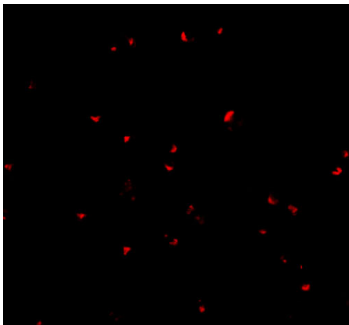
## Anti-Protein orai-2 ORAI2 Antibody (A07411) Images



Western blot analysis of ORAI2 in Jurkat cell lysate with ORAI2 antibody at (A) 1, (B) 2 and (C) 4 ug/mL.



Immunocytochemistry of ORAI2 in Jurkat cells with ORAI2 antibody at 5 ug/mL.



Immunofluorescence of ORAI2 in Jurkat cells with ORAI2 antibody at 20 ug/mL.

### Submit a product review to [Biocompare.com](https://www.biocompare.com)

Submit a review of this product to [Biocompare.com](https://www.biocompare.com) to receive a \$20 Amazon.com giftcard! Your reviews help your fellow scientists make the right decisions. Thank you for your contribution.



Anti-Protein orai-2 ORAI2 Antibody

For Research Use Only. Not for use in diagnostic procedures.