

Anti-BAPX1 NKX3-2 Antibody

Catalog Number: A07429

About NKX3-2

BAPX1 is the mammalian homolog of the *Drosophila* bagpipe homeobox gene and is expressed in the splanchnic mesoderm and embryonic skeleton. It is one of the earliest developmental markers for the sclerotome portion of the somite and the gut mesentery. BAPX1 is required for normal skeletal development; homozygous inactivating mutations in the BAPX1 gene result in spodylo-megaepiphyseal-metaphyseal dysplasia (SMMD). It has also been suggested to play a role in the proper development of the mammalian gut and is required for distal stomach development as part of a BARX1-dependent pathway.

Overview

Product Name	Anti-BAPX1 NKX3-2 Antibody
Reactive Species	Human, Mouse, Rat
Description	Boster Bio Anti-BAPX1 NKX3-2 Antibody (Catalog # A07429). Tested in ELISA, WB, IHC-P, IF applications. This antibody reacts with Human, Mouse, Rat.
Application	ELISA, IF, IHC-P, WB
Clonality	Polyclonal
Formulation	BAPX1 Antibody is supplied in PBS containing 0.02% sodium azide.
Storage Instructions	Antibody can be stored at 4°C up to one year. Antibodies should not be exposed to prolonged high temperatures.
Host	Rabbit
Uniprot ID	P78367

Technical Details

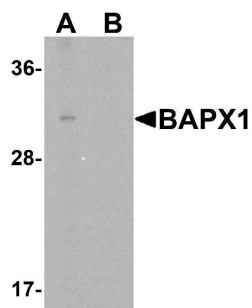
Immunogen	BAPX1 antibody was raised against a 19 amino acid synthetic peptide near the center of human BAPX1. The immunogen is located within amino acids 180 - 230 of BAPX1.
Predicted Reactive Species	Chicken
Cross Reactivity	BAPX1 antibody is predicted not to cross-react with other NKX homeobox proteins.
Isotype	IgG
Form	Liquid
Concentration	1 mg/mL
Purification	BAPX1 Antibody is affinity chromatography purified via peptide column.

Suggested Dilutions

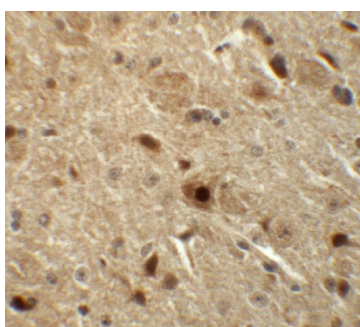
BAPX1 antibody can be used for detection of BAPX1 by Western blot at 1 and 2 ug/mL. Antibody can also be used for immunohistochemistry starting at 5 ug/mL. For immunofluorescence start at 20 ug/mL.

Antibody validated: Western Blot in human samples; Immunohistochemistry in mouse samples and Immunofluorescence in mouse samples. All other applications and species not yet tested. Optimal dilutions for each application should be determined by the researcher.

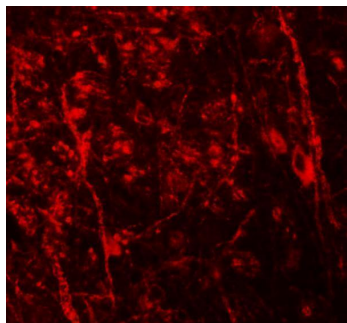
Anti-BAPX1 NKX3-2 Antibody (A07429) Images



Western blot analysis of BAPX1 in human brain tissue lysate with BAPX1 antibody at 1 ug/mL in (A) the absence and (B) the presence of blocking peptide.



Immunohistochemistry of BAPX1 in mouse brain tissue with BAPX1 antibody at 5 ug/mL.



Immunofluorescence of BAPX1 in mouse brain tissue with BAPX1 antibody at 20 ug/mL.

Submit a product review to [Biocompare.com](https://www.biocompare.com)

Submit a review of this product to [Biocompare.com](https://www.biocompare.com) to receive a \$20 Amazon.com giftcard! Your reviews help your fellow scientists make the right decisions. Thank you for your contribution.



Anti-BAPX1 NKX3-2 Antibody

For Research Use Only. Not for use in diagnostic procedures.