

## Anti-WSB1 Antibody

Catalog Number: A07445

### About WSB1

The WD repeat and SOCS box-containing 1 (WSB1, also known as SWIP1), is a member of the WD-protein subfamily (1). It contains six WD-repeats spanning most of the protein and an SOCS box in the C-terminus and expressed as multiple alternatively spliced isoforms (1,2). WSB1 is thought to function as part of an SCF-like ECS (Elongin-Cullin-SOCS-box protein) E3 ubiquitin ligase complex that mediates the ubiquitination and proteasomal degradation of target proteins, such as DIO2 (3). Overexpression of WSB1 is implicated in pancreatic cancer progression, suggesting a role for WSB1 in carcinogenesis (4,5).

### Overview

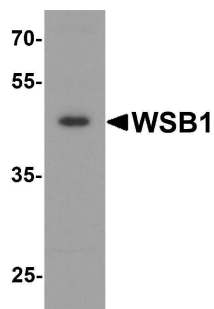
Product Name	Anti-WSB1 Antibody
Reactive Species	Human
Description	Boster Bio Anti-WSB1 Antibody (Catalog # A07445). Tested in ELISA, WB, IHC-P, IF applications. This antibody reacts with Human.
Application	ELISA, IF, IHC-P, WB
Clonality	Polyclonal
Formulation	WSB1 antibody is supplied in PBS containing 0.02% sodium azide.
Storage Instructions	WSB1 antibody can be stored at 4°C for three months and -20°C, stable for up to one year.
Host	Rabbit
Uniprot ID	Q9Y6I7

### Technical Details

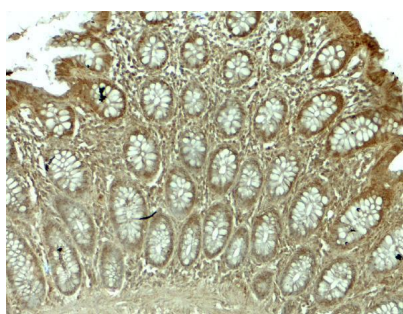
Immunogen	WSB1 antibody was raised against a 16 amino acid peptide near the amino terminus of human WSB1. The immunogen is located within amino acids 70 - 120 of WSB1.
Predicted Reactive Species	Mouse
Cross Reactivity	WSB1 antibody is human specific.
Isotype	IgG
Form	Liquid
Concentration	1 mg/mL
Purification	WSB1 antibody is affinity chromatography purified via peptide column.
Suggested Dilutions	WSB1 antibody can be used for detection of WSB1 by Western blot at 1 - 2 ug/mL. Antibody can also

be used for immunohistochemistry starting at 5 ug/mL. For immunofluorescence start at 20 ug/mL. Antibody validated: Western Blot in human samples; Immunohistochemistry in human samples and Immunofluorescence in human samples. All other applications and species not yet tested. Optimal dilutions for each application should be determined by the researcher.

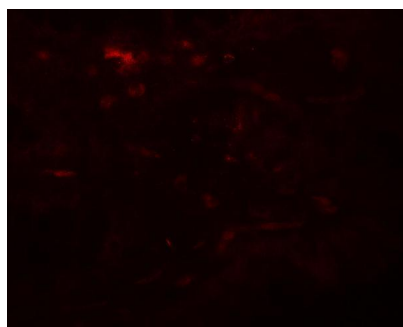
## Anti-WSB1 Antibody (A07445) Images



Western blot analysis of WSB1 in human colon tissue lysate with WSB1 antibody at 1 ug/ml.



Immunohistochemistry of WSB1 in human colon tissue with WSB1 antibody at 5 ug/mL.



Immunofluorescence of WSB1 in human colon tissue with WSB1 antibody at 20 ug/mL.

### Submit a product review to Biocompare.com

Submit a review of this product to Biocompare.com to receive a \$20 Amazon.com giftcard! Your reviews help your fellow scientists make the right decisions. Thank you for your contribution.



Anti-WSB1 Antibody

For Research Use Only. Not for use in diagnostic procedures.