

Anti-PPP3CC Antibody Picoband®

Catalog Number: A07461-1

About PPP3CC

Serine/threonine-protein phosphatase 2B catalytic subunit gamma isoform (PP2BC) is an enzyme that in humans is encoded by the PPP3CC gene. Calcineurin is a calcium-dependent, calmodulin-stimulated protein phosphatase involved in the downstream regulation of dopaminergic signal transduction. Calcineurin is composed of a regulatory subunit and a catalytic subunit. The protein encoded by this gene represents one of the regulatory subunits that has been found for calcineurin. Three transcript variants encoding different isoforms have been found for this gene.

Overview

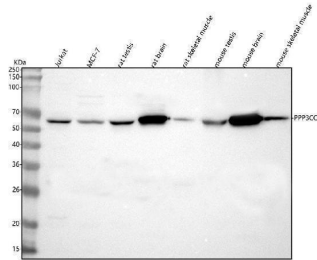
Product Name	Anti-PPP3CC Antibody Picoband®
Reactive Species	Human, Mouse, Rat
Description	Boster Bio Anti-PPP3CC Antibody Picoband® catalog # A07461-1. Tested in WB, FCM, ELISA applications. This antibody reacts with Human, Mouse, Rat. The brand Picoband indicates this is a premium antibody that guarantees superior quality, high affinity, and strong signals with minimal background in Western blot applications. Only our best-performing antibodies are designated as Picoband, ensuring unmatched performance.
Application	ELISA, Flow Cytometry, WB
Clonality	Polyclonal
Formulation	Each vial contains 4 mg Trehalose, 0.9 mg NaCl, 0.2 mg Na ₂ HPO ₄ .
Storage Instructions	At -20°C for one year from date of receipt. After reconstitution, at 4°C for one month. It can also be aliquotted and stored frozen at -20°C for six months. Avoid repeated freezing and thawing.
Host	Rabbit
Uniprot ID	P48454

Technical Details

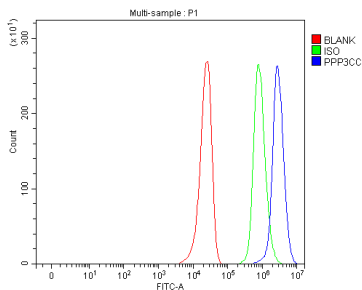
Immunogen	E.coli-derived human PPP3CC recombinant protein (Position: Q24-S512).
Recommended Detection Systems	Boster recommends Enhanced Chemiluminescent Kit with anti-Rabbit IgG (EK1002) for Western blot.
Form	Lyophilized
Concentration	Adding 0.2 ml of distilled water will yield a concentration of 500 µg/ml.
Purification	Immunogen affinity purified.
Suggested Dilutions	Western blot, 0.25-0.5 µg/ml, Human, Mouse, Rat Flow Cytometry (Fixed), 1-3 µg / 1x10 ⁶ cells, Human

ELISA, 0.1-0.5 ug/ml, -

Anti-PPP3CC Antibody Picoband® (A07461-1) Images



Western blot analysis of PPP3CC using anti-PPP3CC antibody (A07461-1). Electrophoresis was performed on a 5-20% SDS-PAGE gel at 70V (Stacking gel) / 90V (Resolving gel) for 2-3 hours. The sample well of each lane was loaded with 30 ug of sample under reducing conditions. Lane 1: human Jurkat whole cell lysates, Lane 2: human MCF-7 whole cell lysates, Lane 3: rat testis tissue lysates, Lane 4: rat brain tissue lysates, Lane 5: rat skeletal muscle tissue lysates, Lane 6: mouse testis tissue lysates, Lane 7: mouse brain tissue lysates, Lane 8: mouse skeletal muscle tissue lysates. After electrophoresis, proteins were transferred to a nitrocellulose membrane at 150 mA for 50-90 minutes. Blocked the membrane with 5% non-fat milk/TBS for 1.5 hour at RT. The membrane was incubated with rabbit anti-PPP3CC antigen affinity purified polyclonal antibody (Catalog # A07461-1) at 0.5 ug/mL overnight at 4°C, then washed with TBS-0.1%Tween 3 times with 5 minutes each and probed with a goat anti-rabbit IgG-HRP secondary antibody at a dilution of 1:5000 for 1.5 hour at RT. The signal is developed using an Enhanced Chemiluminescent detection (ECL) kit (Catalog # EK1002) with Tanon 5200 system. A specific band was detected for PPP3CC at approximately 65 kDa. The expected band size for PPP3CC is at 58 kDa.



Flow Cytometry analysis of HepG2 cells using anti-PPP3CC antibody (A07461-1). Overlay histogram showing HepG2 cells stained with A07461-1 (Blue line). To facilitate intracellular staining, cells were fixed with 4% paraformaldehyde and permeabilized with permeabilization buffer. The cells were blocked with 10% normal goat serum. And then incubated with rabbit anti-PPP3CC Antibody (A07461-1, 1 ug/1x10⁶ cells) for 30 min at 20°C. DyLight®488 conjugated goat anti-rabbit IgG (BA1127, 5-10 ug/1x10⁶ cells) was used as secondary antibody for 30 minutes at 20°C. Isotype control antibody (Green line) was rabbit IgG (1 ug/1x10⁶) used under the same conditions. Unlabelled sample (Red line) was also used as a control.

Submit a product review to Biocompare.com

Submit a review of this product to Biocompare.com to receive a \$20 Amazon.com giftcard! Your reviews help your fellow scientists make the right decisions. Thank you for your contribution.



Anti-PPP3CC Antibody

For Research Use Only. Not for use in diagnostic procedures.