

Anti-F1A alpha FEM1B Antibody

Catalog Number: A07467

About FEM1B

Fas and tumor necrosis factor receptor 1 (TNFR1) are two prototype members in the death receptor family. A novel protein that associates with the intracellular domains of Fas and TNFR1 was recently identified and designated F1Aalpha and FEM1beta. F1Aalpha/FEM1beta is the homologue of *C. elegans* sex determining protein FEM-1. FEM-1/F1Aalpha is cleaved by CED-3 and caspase. FEM-1/F1Aalpha associates with CED-4 and its mammalian homologue Apaf-1. Overexpression of F1Aalpha induces apoptosis. F1Aalpha is therefore a novel member of the death receptor associated protein that mediates apoptosis. F1Aalpha is expressed in a variety of human and mouse tissues.

Overview

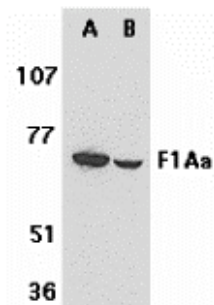
Product Name	Anti-F1A alpha FEM1B Antibody
Reactive Species	Human, Mouse, Rat
Description	Boster Bio Anti-F1A alpha FEM1B Antibody (Catalog # A07467). Tested in ELISA, WB, IHC-P, IF applications. This antibody reacts with Human, Mouse, Rat.
Application	ELISA, IF, IHC-P, WB
Clonality	Polyclonal
Formulation	F1A alpha Antibody is supplied in PBS containing 0.02% sodium azide.
Storage Instructions	F1A alpha antibody can be stored at 4°C for three months and -20°C, stable for up to one year. Avoid repeated freeze-thaw cycles. Antibodies should not be exposed to prolonged high temperatures.
Host	Rabbit
Uniprot ID	Q9UK73

Technical Details

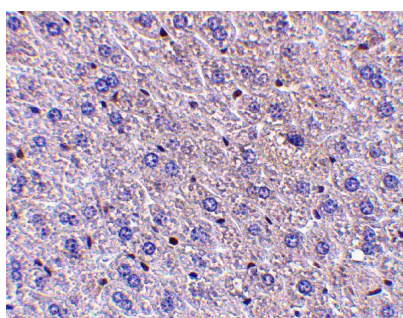
Immunogen	F1A antibody was raised against a 14 amino acid peptide near the carboxy terminus of human F1A. The immunogen is located within the last 50 amino acids of F1A alpha.
Predicted Reactive Species	Chicken
Isotype	IgG
Form	Liquid
Concentration	1 mg/ml
Purification	F1A alpha Antibody is affinity chromatography purified via peptide column.
Suggested Dilutions	F1Ab antibody can be used for detection of F1Ab by Western blot at 1 ug/mL. An approximately 70 kDa band can be detected. Antibody can also be used for immunohistochemistry starting at 5 ug/mL.

For immunofluorescence start at 20 ug/mL.
Antibody validated: Western Blot in mouse and rat samples; Immunohistochemistry in mouse samples and Immunofluorescence in mouse samples. All other applications and species not yet tested. Optimal dilutions for each application should be determined by the researcher.

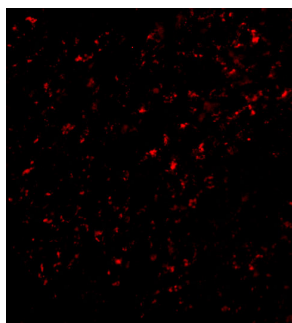
Anti-F1A alpha FEM1B Antibody (A07467) Images



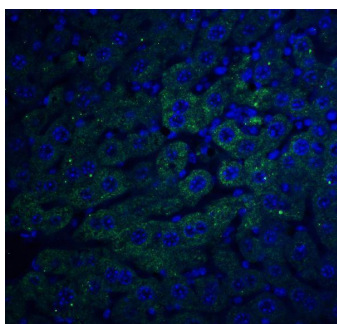
Western blot analysis of F1A alpha in mouse (A) and rat (B) liver tissue lysates with F1A alpha antibody at 1 ug/mL.



Immunohistochemistry of F1Aalpha in mouse liver tissue with F1Aalpha antibody at 5 ug/mL.



Immunofluorescence of F1A alpha in Mouse Liver cells with F1A alpha antibody at 20 ug/mL.



Immunofluorescence of F1A alpha in mouse liver tissue with F1A alpha antibody at 20 ug/ml. Green: F1A alpha Antibody (A07467) Blue: DAPI staining

Submit a product review to [Biocompare.com](https://www.biocompare.com)

Submit a review of this product to [Biocompare.com](https://www.biocompare.com) to receive a \$20 Amazon.com giftcard! Your reviews help your fellow scientists make the right decisions. Thank you for your contribution.



Anti-F1A alpha FEM1B Antibody

For Research Use Only. Not for use in diagnostic procedures.