

## Anti-GFR alpha 3 Gfra3 Antibody

Catalog Number: A07481

### About GFRA3

Members of the glial cell line-derived neurotrophic factor (GDNF) family, including GDNF and neurturin (NTN) play essential roles in the control of vertebrate neuron survival and differentiation. A new member of the GDNF family was recently identified and designated persephin. Physiological responses to these neurotrophic factors require two receptor subunits, the novel glycosylphosphatidylinositol linked protein GFRalpha and Ret receptor tyrosine kinase GFRbeta. Following the findings of GFRalpha-1 and -2, a novel receptor in GFRalpha family was identified from human and mouse and designated GFRalpha-3. GFRalpha-3 binds persephin, thus, persephin, GFRalpha-3, and Ret PTK form a complex to transduce persephin signal and to mediate persephin function.

### Overview

|                      |  |
|----------------------|--|
| Product Name         | Anti-GFR alpha 3 Gfra3 Antibody  |
| Reactive Species     | Human, Mouse, Rat  |
| Description          | Boster Bio Anti-GFR alpha 3 Gfra3 Antibody (Catalog # A07481). Tested in ELISA, WB, IHC-P, IF applications. This antibody reacts with Human, Mouse, Rat.   |
| Application          | ELISA, IF, IHC-P, WB   |
| Clonality            | Polyclonal   |
| Formulation          | GFR alpha 3 Antibody is supplied in PBS containing 0.02% sodium azide.   |
| Storage Instructions | GFR alpha 3 antibody can be stored at 4°C for three months and -20°C, stable for up to one year. Avoid repeated freeze-thaw cycles. Antibodies should not be exposed to prolonged high temperatures. |
| Host                 | Rabbit   |
| Uniprot ID           | O35118   |

### Technical Details

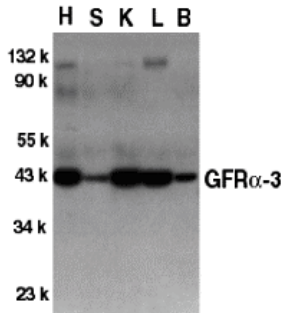
|                            |  |
|----------------------------|--|
| Immunogen                  | GFR alpha 3 antibody was raised against a 14 amino acid peptide near the center of murine GFR alpha 3. The immunogen is located within the last 50 amino acids of GFR alpha 3. |
| Predicted Reactive Species | Chicken  |
| Isotype                    | IgG  |
| Form                       | Liquid   |
| Concentration              | 1 mg/ml  |
| Purification               | GFR alpha 3 Antibody is Antibody is DEAE purified.   |

Suggested Dilutions

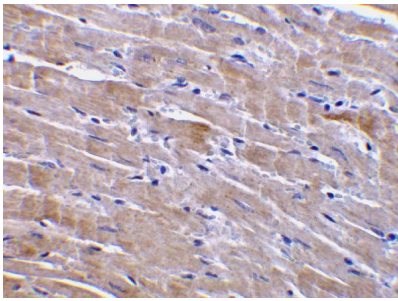
GFR alpha 3 antibody can be used for detection of GFR alpha 3 expression by Western blot at 0.5 ug/mL. Antibody can also be used for immunohistochemistry starting at 5 ug/mL. For immunofluorescence start at 5 ug/mL.

Antibody validated: Western Blot in mouse samples; Immunohistochemistry in mouse samples and Immunofluorescence in mouse samples. All other applications and species not yet tested. Optimal dilutions for each application should be determined by the researcher.

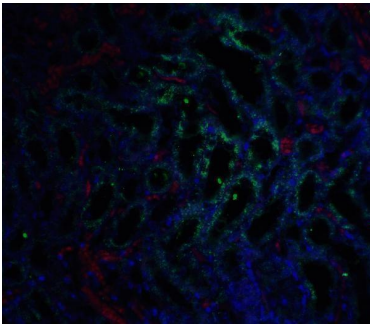
## Anti-GFR alpha 3 Gfra3 Antibody (A07481) Images



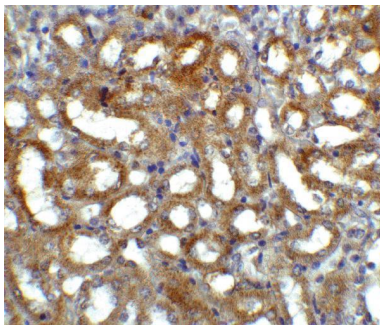
Western blot analysis of GFR alpha 3 in crude cell membrane fractions of mouse heart (H), spleen (S), kidney (K), liver (L), and brain (B), respectively, with GFR alpha 3 antibody at 1.2 ug/mL.



Immunohistochemistry of GFR alpha 3 in mouse heart tissue with GFR alpha 3 antibody at 10 ug/mL.



Immunofluorescence of GFR alpha 3 in mouse kidney tissue with GFR alpha 3 antibody at 5 ug/ml. Green: GFR alpha 3 antibody (A07481) Red: Phylloidin staining Blue: DAPI staining



Immunohistochemistry of GFR alpha 3 in mouse kidney tissue with GFR alpha 3 antibody at 5 ug/ml.

Submit a product review to [Biocompare.com](https://www.biocompare.com)

Submit a review of this product to [Biocompare.com](https://www.biocompare.com) to receive a \$20 Amazon.com giftcard! Your reviews help your fellow scientists make the right decisions. Thank you for your contribution.



For Research Use Only. Not for use in diagnostic procedures.