

Anti-PACRG Antibody

Catalog Number: A07487

About PACRG

PACRG (also known as Parkin coregulated gene protein and PARK2 coregulated) is a gene located very close to parkin, in reverse orientation on the chromosome. It is thought to be co-transcribed with parkin by a bi-directional promoter between the two genes. PACRG is expressed in all immune tissues, spleen, lymph nodes, thymus, tonsils, leukocyte and bone marrow and is also expressed in heart, brain, skeletal muscle, kidney, lung and pancreas. PACRG is expressed in primary Schwann cells and very weakly by monocyte-derived macrophages, which are the primary host cells of *Mycobacterium leprae*, the causative agent of leprosy. Splice variants have been described for this protein.

Overview

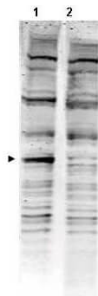
Product Name	Anti-PACRG Antibody
Reactive Species	Mouse
Description	Boster Bio Anti-PACRG Antibody (Catalog # A07487). Tested in ELISA, WB applications. This antibody reacts with Mouse.
Application	ELISA, WB
Clonality	Polyclonal
Formulation	0.02 M Potassium Phosphate, 0.15 M Sodium Chloride, pH 7.2, 0.01% (w/v) Sodium Azide
Storage Instructions	Store vial at -20°C prior to opening. Aliquot contents and freeze at -20°C or below for extended storage. Avoid cycles of freezing and thawing. Centrifuge product if not completely clear after standing at room temperature. This product is stable for several weeks at 4°C as an undiluted liquid. Dilute only prior to immediate use. Expiration date is one (1) year from date of opening. (Ship on dry ice.)
Host	Rabbit
Uniprot ID	Q96M98

Technical Details

Immunogen	This affinity purified antibody was prepared from whole rabbit serum produced by repeated immunizations with a synthetic peptide corresponding to an internal region of Human PACRG protein.
Predicted Reactive Species	Chicken
Cross Reactivity	No cross reactivity with other proteins.
Isotype	IgG
Form	Liquid (sterile filtered)

Concentration	1.6 mg/mL by UV absorbance at 280 nm
Purification	This affinity purified antibody is directed against human PACRG protein. The product was affinity purified from monospecific antiserum by immunoaffinity purification. A BLAST analysis was used to suggest reactivity with this protein from human, mouse and chicken based on 100% homology for the immunogen sequence. Cross-reactivity with PACRG protein from zebrafish and rat may occur as this sequence only varies by one amino acid residue (94% homology). Expect reactivity with both splice variants of this protein. Cross-reactivity with PACRG homologues from other sources has not been determined.
Suggested Dilutions	ELISA: 1:2,000 - 1:10,000 WB: 1:500 - 1:3,000 This affinity purified antibody has been tested for use in ELISA and western blot.

Anti-PACRG Antibody (A07487) Images



Western blot using Boster's Affinity Purified anti-PACRG antibody shows detection of a band ~40 kDa corresponding to human PACRG (arrowhead lane 1). Specific reactivity with this band is blocked when the antibody is pre-incubated with the immunizing peptide (lane 2). Approximately 35 ug of a mouse embryonic fibroblast (MEF) whole cell lysate was separated by 4-20% SDS-PAGE and transferred onto nitrocellulose. After blocking the membrane was probed with the primary antibody diluted to 1:1,500 for 2h at room temperature followed by washes and reaction with a 1:10,000 dilution of IRDye800 conjugated Gt-a-Rabbit IgG [H&L] MX (611-132-122) for 45 min at room temperature. IRDye800 fluorescence image was captured using the Odyssey® Infrared Imaging System developed by LI-COR. IRDye is a trademark of LI-COR, Inc. Other detection systems will yield similar results.

Submit a product review to [Biocompare.com](https://www.biocompare.com)

Submit a review of this product to [Biocompare.com](https://www.biocompare.com) to receive a \$20 Amazon.com giftcard! Your reviews help your fellow scientists make the right decisions. Thank you for your contribution.



Anti-PACRG Antibody

For Research Use Only. Not for use in diagnostic procedures.