

## Anti-Protein Iyl-1 LYL1 Antibody

Catalog Number: A07491

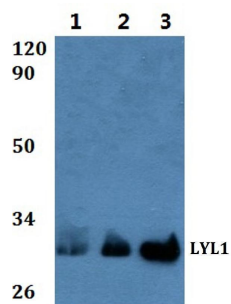
### Overview

|                      |  |
|----------------------|--|
| Product Name         | Anti-Protein Iyl-1 LYL1 Antibody   |
| Reactive Species     | Human, Mouse, Rat  |
| Description          | Boster Bio Anti-Protein Iyl-1 LYL1 Antibody catalog # A07491. Tested in WB applications. This antibody reacts with Human,Mouse,Rat.        |
| Application          | WB   |
| Clonality            | Polyclonal   |
| Formulation          | Rabbit IgG, 1mg/ml in PBS with 0.02% sodium azide, 50% glycerol, pH7.2   |
| Storage Instructions | Store at -20°C for one year. For short term storage and frequent use, store at 4°C for up to one month. Avoid repeated freeze-thaw cycles. |
| Host                 | Rabbit   |
| Uniprot ID           | P12980   |

### Technical Details

|                     |   |
|---------------------|---|
| Immunogen           | A synthetic peptide corresponding to residues in Human LYL1.  |
| Isotype             | IgG   |
| Form                | Liquid  |
| Concentration       | 1 mg/ml   |
| Purification        | The antibody was affinity-purified from rabbit antiserum by affinity-chromatography using epitope-specific immunogen and the purity is > 95% (by SDS-PAGE). |
| Suggested Dilutions | WB: 1:500-1:1000  |

## Anti-Protein lyl-1 LYL1 Antibody (A07491) Images



Western blot (WB) analysis of LYL1 polyclonal antibody at 1:500 Line1:HEK293T whole cell lysate Line2:H9C2 whole cell lysate Line3:Raw264.7 whole cell lysate

### Submit a product review to Biocompare.com

Submit a review of this product to Biocompare.com to receive a \$20 Amazon.com giftcard! Your reviews help your fellow scientists make the right decisions. Thank you for your contribution.



Anti-Protein lyl-1 LYL1 Antibody

For Research Use Only. Not for use in diagnostic procedures.