

## Anti-WDR12 Antibody Picoband®

Catalog Number: A07492-1

### About WDR12

Ribosome biogenesis protein WDR12 is a protein that in humans is encoded by the WDR12 gene on chromosome 2. This gene encodes a member of the WD repeat protein family. WD repeats are minimally conserved regions of approximately 40 amino acids typically bracketed by gly-his and trp-asp (GH-WD), which may facilitate formation of heterotrimeric or multiprotein complexes. Members of this family are involved in a variety of cellular processes, including cell cycle progression, signal transduction, apoptosis, and gene regulation. This protein is highly similar to the mouse WD repeat domain 12 protein at the amino acid level. The protein encoded by this gene is a component of a nucleolar protein complex that affects maturation of the large ribosomal subunit.

### Overview

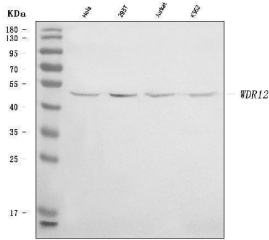
|                      |   |
|----------------------|---|
| Product Name         | Anti-WDR12 Antibody Picoband®   |
| Reactive Species     | Human   |
| Description          | Boster Bio Anti-WDR12 Antibody Picoband® catalog # A07492-1. Tested in ELISA, Flow Cytometry, WB applications. This antibody reacts with Human. The brand Picoband indicates this is a premium antibody that guarantees superior quality, high affinity, and strong signals with minimal background in Western blot applications. Only our best-performing antibodies are designated as Picoband, ensuring unmatched performance. |
| Application          | ELISA, Flow Cytometry, WB   |
| Clonality            | Polyclonal  |
| Formulation          | Each vial contains 4 mg Trehalose, 0.9 mg NaCl, 0.2 mg Na <sub>2</sub> HPO <sub>4</sub> .   |
| Storage Instructions | At -20°C for one year from date of receipt. After reconstitution, at 4°C for one month. It can also be aliquotted and stored frozen at -20°C for six months. Avoid repeated freezing and thawing.   |
| Host                 | Rabbit  |
| Uniprot ID           | Q9GZL7  |

### Technical Details

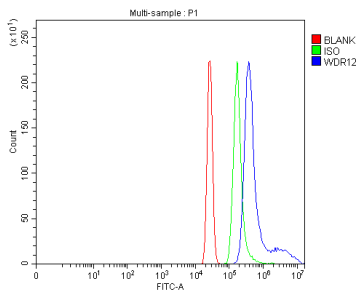
|                               |   |
|-------------------------------|---|
| Immunogen                     | E.coli-derived human WDR12 recombinant protein (Position: R7-D396).                             |
| Recommended Detection Systems | Boster recommends Enhanced Chemiluminescent Kit with anti-Rabbit IgG (EK1002) for Western blot. |
| Cross Reactivity              | No cross-reactivity with other proteins.  |
| Isotype                       | Rabbit IgG  |
| Form                          | Lyophilized   |

|                     |   |
|---------------------|---|
| Concentration       | Adding 0.2 ml of distilled water will yield a concentration of 500 ug/ml.   |
| Purification        | Immunogen affinity purified.  |
| Suggested Dilutions | Western blot, 0.25-0.5 ug/ml, Human<br>Flow Cytometry (Fixed), 1-3 ug/1x10 <sup>6</sup> cells, Human<br>ELISA, 0.1-0.5 ug/ml, - |

## Anti-WDR12 Antibody Picoband® (A07492-1) Images



Western blot analysis of WDR12 using anti-WDR12 antibody (A07492-1). Electrophoresis was performed on a 5-20% SDS-PAGE gel at 70V (Stacking gel) / 90V (Resolving gel) for 2-3 hours. The sample well of each lane was loaded with 30 ug of sample under reducing conditions. Lane 1: human Hela whole cell lysates, Lane 2: human 293T whole cell lysates, Lane 3: human Jurkat whole cell lysates, Lane 4: human K562 whole cell lysates. After electrophoresis, proteins were transferred to a nitrocellulose membrane at 150 mA for 50-90 minutes. Blocked the membrane with 5% non-fat milk/TBS for 1.5 hour at RT. The membrane was incubated with rabbit anti-WDR12 antigen affinity purified polyclonal antibody (Catalog # A07492-1) at 0.5 ug/mL overnight at 4°C, then washed with TBS-0.1%Tween 3 times with 5 minutes each and probed with a goat anti-rabbit IgG-HRP secondary antibody at a dilution of 1:5000 for 1.5 hour at RT. The signal is developed using an Enhanced Chemiluminescent detection (ECL) kit (Catalog # EK1002) with Tanon 5200 system. A specific band was detected for WDR12 at approximately 48 kDa. The expected band size for WDR12 is at 48 kDa.



Flow Cytometry analysis of HL-60 cells using anti-WDR12 antibody (A07492-1). Overlay histogram showing HL-60 cells stained with A07492-1 (Blue line). To facilitate intracellular staining, cells were fixed with 4% paraformaldehyde and permeabilized with permeabilization buffer. The cells were blocked with 10% normal goat serum. And then incubated with rabbit anti-WDR12 Antibody (A07492-1, 1 ug/1x10<sup>6</sup> cells) for 30 min at 20°C. DyLight®488 conjugated goat anti-rabbit IgG (BA1127, 5-10 ug/1x10<sup>6</sup> cells) was used as secondary antibody for 30 minutes at 20°C. Isotype control antibody (Green line) was rabbit IgG (1 ug/1x10<sup>6</sup>) used under the same conditions. Unlabelled sample without incubation with primary antibody and secondary antibody (Red line) was used as a blank control.

### Submit a product review to [Biocompare.com](https://www.biocompare.com)

Submit a review of this product to [Biocompare.com](https://www.biocompare.com) to receive a \$20 Amazon.com giftcard! Your reviews help your fellow scientists make the right decisions. Thank you for your contribution.



Anti-WDR12 Antibody

For Research Use Only. Not for use in diagnostic procedures.