

Anti-CLC-6 CLCN6 Antibody

Catalog Number: A07500

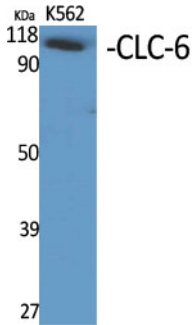
Overview

Product Name	Anti-CLC-6 CLCN6 Antibody
Reactive Species	Human, Monkey, Mouse, Rat
Description	Boster Bio Anti-CLC-6 CLCN6 Antibody catalog # A07500. Tested in WB, ELISA applications. This antibody reacts with Human, Mouse, Rat, Monkey.
Application	ELISA, WB
Clonality	Polyclonal
Formulation	Liquid in PBS containing 50% glycerol, 0.5% stabilizing protein and 0.02% sodium azide. This antibody is supplied in a stabilized formulation. Compatibility with conjugation reactions depends on the chemistry of the conjugation method used. For conjugation methods that are not compatible with the stabilizing components present in this formulation, a carrier-free antibody format is required.
Storage Instructions	Store at -20°C for one year. For short term storage and frequent use, store at 4°C for up to one month. Avoid repeated freeze-thaw cycles.
Host	Rabbit
Uniprot ID	P51797

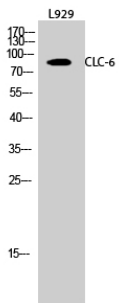
Technical Details

Immunogen	The antiserum was produced against synthesized peptide derived from human CLCN6. AA range:611-660
Isotype	IgG
Form	Liquid
Concentration	1 mg/ml
Purification	Immunogen affinity purified
Suggested Dilutions	WB 1:500-1:2000 ELISA 1:40000

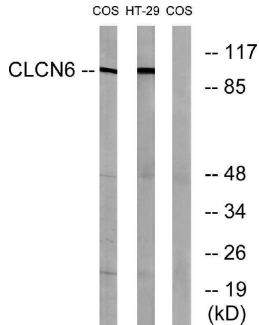
Anti-CLC-6 CLCN6 Antibody (A07500) Images



Western Blot analysis of various cells using CLC-6 Polyclonal Antibody diluted at 1:500



Western Blot analysis of L929 cells using CLC-6 Polyclonal Antibody diluted at 1:500



Western blot analysis of lysates from COS7 and HT-29 cells, using CLCN6 Antibody. The lane on the right is blocked with the synthesized peptide.

Submit a product review to [Biocompare.com](https://www.biocompare.com)

Submit a review of this product to [Biocompare.com](https://www.biocompare.com) to receive a \$20 Amazon.com giftcard! Your reviews help your fellow scientists make the right decisions. Thank you for your contribution.



Anti-CLC-6 CLCN6 Antibody

For Research Use Only. Not for use in diagnostic procedures.