

Anti-Metalloreductase STEAP1 STEAP1 Antibody

Catalog Number: A07506

About STEAP1

The six-transmembrane epithelial antigen of prostate 1 (STEAP1) was the first member of a family of metalloreductases identified as cell-surface antigens in prostate tissue. The normal function of STEAP is still uncertain; unlike other members of the STEAP family, STEAP1 does not promote iron or copper reduction or uptake and lacks the FNO-like reductase domain critical for activity. However, its expression is highly increased in multiple cancer cell lines, including prostate, bladder, colon, and ovarian cancers. Supporting this is evidence that STEAP1 peptides can be used to stimulate CD8+ T cells from healthy donors, enabling them to recognize STEAP1-positive human tumor cells, suggesting that STEAP1 may a potential target for cancer immunotherapy. At least three isoforms of STEAP1 are known to exist.

Overview

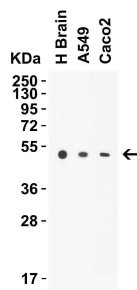
Product Name	Anti-Metalloreductase STEAP1 STEAP1 Antibody
Reactive Species	Human, Mouse, Rat
Description	Boster Bio Anti-Metalloreductase STEAP1 STEAP1 Antibody (Catalog # A07506). Tested in ELISA, WB, IHC-P applications. This antibody reacts with Human, Mouse, Rat.
Application	ELISA, IHC-P, WB
Clonality	Polyclonal
Formulation	STEAP1 Antibody is supplied in PBS containing 0.02% sodium azide.
Storage Instructions	STEAP1 antibody can be stored at 4°C for three months and -20°C, stable for up to one year. Avoid repeated freeze-thaw cycles. Antibodies should not be exposed to prolonged high temperatures.
Host	Rabbit
Uniprot ID	Q9UHE8

Technical Details

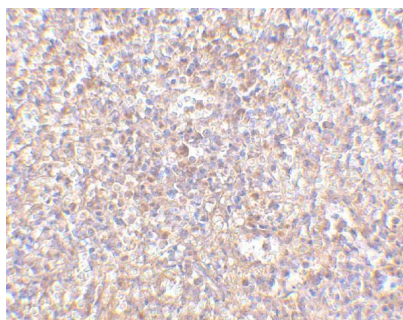
Immunogen	STEAP1 antibody was raised against a 18 amino acid synthetic peptide from near the carboxy terminus of human STEAP1. The immunogen is located within the last 50 amino acids of STEAP1.
Predicted Reactive Species	Pig
Cross Reactivity	This STEAP1 antibody does not cross-react with other STEAP proteins.
Isotype	IgG
Form	Liquid
Concentration	1 mg/mL

Purification	STEAP1 Antibody is affinity chromatography purified via peptide column.
Suggested Dilutions	STEAP1 antibody can be used for detection of STEAP1 by Western blot at 1 - 2 ug/mL. Antibody can also be used for immunohistochemistry starting at 2.5 ug/mL. Antibody validated: Western Blot in human samples and Immunohistochemistry in human samples. All other applications and species not yet tested. Optimal dilutions for each application should be determined by the researcher.

Anti-Metalloreductase STEAP1 STEAP1 Antibody (A07506) Images



WB Validation in Human Loading: 10 ug of lysate per lane.
Antibodies: Steap1 A07506, 2 ug/mL, 1 h incubation at RT in
5% NFDm/TBST. Secondary: Goat anti-rabbit IgG HRP
conjugate at 1:10000 dilution.



Immunohistochemistry of STEAP1 in human spleen tissue
with STEAP1 antibody at 2.5 ug/mL.

Submit a product review to Biocompare.com

Submit a review of this product to Biocompare.com to receive a \$20 Amazon.com giftcard! Your reviews help your fellow scientists make the right decisions. Thank you for your contribution.



Anti-Metalloreductase STEAP1 STEAP1 Antibody

For Research Use Only. Not for use in diagnostic procedures.