

## Anti-SLIT and NTRK-like protein 1 Slitrk1 Antibody

Catalog Number: A07507

### About SLITRK1

SLIT and NTRK-like family 1 (Slitrk1) is a member a protein family consisting of six homologous transmembrane proteins (Slitrk1-6) that share two conserved leucine-rich repeat domains in the extracellular domain and have significant homology to Slit, a secreted axonal growth-controlling protein. These proteins are also homologous to trk neurotrophin receptors in their intracellular domains. Expression of Slitrk proteins is highly restricted to neural and brain tumor tissues, but varies within the family. For example, Slitrk1 is expressed primarily in mature neurons. Overexpression of Slitrk1 in transfected neuronal cells induced unipolar neurites, while expression of the other Slitrk proteins inhibited neurite outgrowth, suggesting that these proteins are involved in the control of neurite outgrowth. While Slitrk1 variants have been suggested associated with Tourette's Syndrome, it is thought to play only a minor role if at all.

### Overview

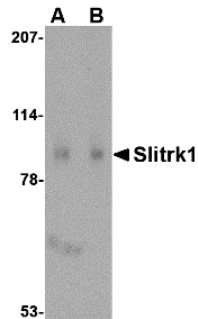
Product Name	Anti-SLIT and NTRK-like protein 1 Slitrk1 Antibody
Reactive Species	Human, Mouse, Rat
Description	Boster Bio Anti-SLIT and NTRK-like protein 1 Slitrk1 Antibody (Catalog # A07507). Tested in ELISA, WB, IHC-P, IF applications. This antibody reacts with Human, Mouse, Rat.
Application	ELISA, IF, IHC-P, WB
Clonality	Polyclonal
Formulation	Slitrk1 Antibody is supplied in PBS containing 0.02% sodium azide.
Storage Instructions	Slitrk1 antibody can be stored at 4°C for three months and -20°C, stable for up to one year. Avoid repeated freeze-thaw cycles. Antibodies should not be exposed to prolonged high temperatures.
Host	Rabbit
Uniprot ID	Q96PX8

### Technical Details

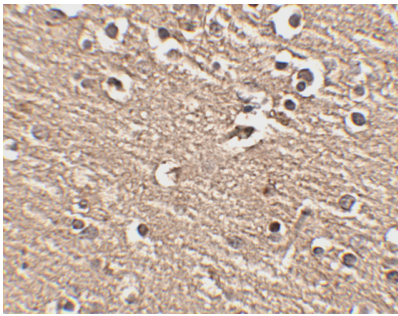
Immunogen	Slitrk1 antibody was raised against a 16 amino acid synthetic peptide from near the carboxy terminus of human Slitrk1. The immunogen is located within amino acids 630 - 680 of Slitrk1.
Predicted Reactive Species	Pig
Cross Reactivity	This antibody is predicted to have no cross-reactivity to other Slitrk proteins.
Isotype	IgG
Form	Liquid
Concentration	1 mg/mL

Purification	Slitrk1 Antibody is affinity chromatography purified via peptide column.
Suggested Dilutions	Slitrk1 antibody can be used for detection of Slitrk1 by Western blot at 1 - 2 ug/mL. Antibody can also be used for immunohistochemistry starting at 2.5 ug/mL. For immunofluorescence start at 20 ug/mL. Antibody validated: Western Blot in human samples; Immunohistochemistry in human samples and Immunofluorescence in human samples. All other applications and species not yet tested. Optimal dilutions for each application should be determined by the researcher.

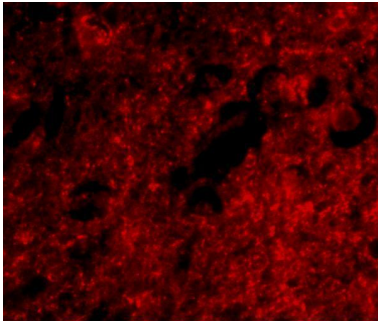
## Anti-SLIT and NTRK-like protein 1 Slitrk1 Antibody (A07507) Images



Western blot analysis of Slitrk1 in human brain tissue lysate with Slitrk1 antibody at (A) 1 and (B) 2 ug/mL.



Immunohistochemistry of Slitrk1 in human brain tissue with Slitrk1 antibody at 2.5 ug/mL.



Immunofluorescence of slitrk1 in human brain tissue with slitrk1 antibody at 20 ug/mL.

### Submit a product review to [Biocompare.com](https://www.biocompare.com)

Submit a review of this product to [Biocompare.com](https://www.biocompare.com) to receive a \$20 Amazon.com giftcard! Your reviews help your fellow scientists make the right decisions. Thank you for your contribution.



Anti-SLIT and NTRK-like protein 1 Slitrk1 Antibody  
For Research Use Only. Not for use in diagnostic procedures.