

## Anti-SLITRK1 Antibody Picoband®

Catalog Number: A07507-2

### About SLITRK1

SLITRK1 ("SLIT and NTRK-like family, member 1") is a human gene that codes for a transmembrane and signalling protein that is part of the SLITRK gene family, which is responsible for synapse regulation and presynaptic differentiation in the brain. This gene encodes a member of the SLITRK protein family. Members of this family are integral membrane proteins that are characterized by two N-terminal leucine-rich repeat (LRR) domains and a C-terminal region that shares homology with trk neurotrophin receptors. However, the protein encoded by this gene lacks the region of homology to neurotrophin receptors. This protein is thought to be involved in neurite outgrowth. Mutations in this gene may be associated with Tourette syndrome. Alternative splicing results in multiple transcript variants.

### Overview

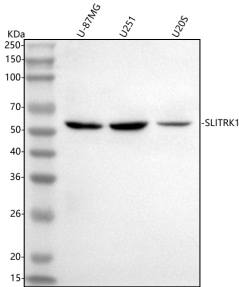
Product Name	Anti-SLITRK1 Antibody Picoband®
Reactive Species	Human
Description	Boster Bio Anti-SLITRK1 Antibody Picoband® catalog # A07507-2. Tested in ELISA, WB, Flow Cytometry applications. This antibody reacts with Human. The brand Picoband indicates this is a premium antibody that guarantees superior quality, high affinity, and strong signals with minimal background in Western blot applications. Only our best-performing antibodies are designated as Picoband, ensuring unmatched performance.
Application	ELISA, Flow Cytometry, WB
Clonality	Polyclonal
Formulation	Each vial contains 4 mg Trehalose, 0.9 mg NaCl, 0.2 mg Na <sub>2</sub> HPO <sub>4</sub> .
Storage Instructions	At -20°C for one year from date of receipt. After reconstitution, at 4°C for one month. It can also be aliquotted and stored frozen at -20°C for six months. Avoid repeated freezing and thawing.
Host	Rabbit
Uniprot ID	Q96PX8

### Technical Details

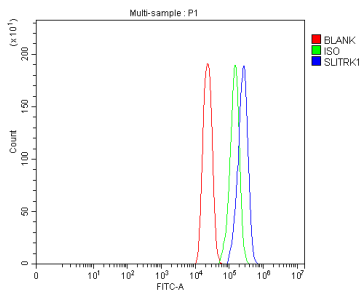
Immunogen	E.coli-derived human SLITRK1 recombinant protein (Position: D22-D696). Human SLITRK1 shares 97.5% amino acid (aa) sequence identity with mouse SLITRK1.
Recommended Detection Systems	Boster recommends Enhanced Chemiluminescent Kit with anti-Rabbit IgG (EK1002) for Western blot.
Cross Reactivity	No cross reactivity with other proteins.
Isotype	IgG

Form	Lyophilized
Concentration	Adding 0.2 ml of distilled water will yield a concentration of 500 µg/ml.
Purification	Immunogen affinity purified.
Suggested Dilutions	Western blot, 0.25-0.5 ug/ml, Human Flow Cytometry (Fixed), 1-3 ug/1x10 <sup>6</sup> cells, Human ELISA, 0.1-0.5 ug/ml, -

## Anti-SLITRK1 Antibody Picoband® (A07507-2) Images



Western blot analysis of SLITRK1 using anti-SLITRK1 antibody (A07507-2). Electrophoresis was performed on a 5-20% SDS-PAGE gel at 70V (Stacking gel) / 90V (Resolving gel) for 2-3 hours. The sample well of each lane was loaded with 30 ug of sample under reducing conditions. Lane 1: human U-87MG whole cell lysates, Lane 2: human U251 whole cell lysates, Lane 3: human U2OS whole cell lysates. After electrophoresis, proteins were transferred to a nitrocellulose membrane at 150 mA for 50-90 minutes. Blocked the membrane with 5% non-fat milk/TBS for 1.5 hour at RT. The membrane was incubated with rabbit anti-SLITRK1 antigen affinity purified polyclonal antibody (Catalog # A07507-2) at 0.5 ug/mL overnight at 4°C, then washed with TBS-0.1%Tween 3 times with 5 minutes each and probed with a goat anti-rabbit IgG-HRP secondary antibody at a dilution of 1:5000 for 1.5 hour at RT. The signal is developed using an Enhanced Chemiluminescent detection (ECL) kit (Catalog # EK1002) with Tanon 5200 system. A specific band was detected for SLITRK1 at approximately 55 kDa. The expected band size for SLITRK1 is at 78 kDa.



Flow Cytometry analysis of U251 cells using anti-SLITRK1 antibody (A07507-2). Overlay histogram showing U251 cells stained with A07507-2 (Blue line). The cells were fixed with 4% paraformaldehyde and blocked with 10% normal goat serum. And then incubated with rabbit anti-SLITRK1 Antibody (A07507-2, 1 ug/1x10<sup>6</sup> cells) for 30 min at 20°C. DyLight® 488 conjugated goat anti-rabbit IgG (BA1127, 5-10 ug/1x10<sup>6</sup> cells) was used as secondary antibody for 30 minutes at 20°C. Isotype control antibody (Green line) was rabbit IgG (1 ug/1x10<sup>6</sup>) used under the same conditions. Unlabelled sample (Red line) was also used as a control.

## Submit a product review to Biocompare.com

Submit a review of this product to Biocompare.com to receive a \$20 Amazon.com giftcard! Your reviews help your fellow scientists make the right decisions. Thank you for your contribution.



Anti-SLITRK1 Antibody

For Research Use Only. Not for use in diagnostic procedures.