

## Anti-HINFP Antibody (Center)

Catalog Number: A07517

### About HINFP

MIZF interacts with methyl-CpG-binding protein-2 (MBD2; MIM 603547), a component of the MeCP1 histone deacetylase (HDAC) complex, and plays a role in DNA methylation and transcription repression.

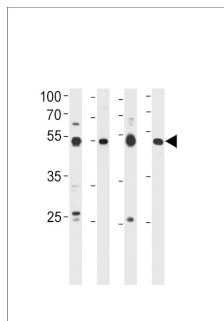
### Overview

Product Name	Anti-HINFP Antibody (Center)
Reactive Species	Human, Mouse
Description	Boster Bio Anti-HINFP Antibody (Center) (Catalog # A07517). Tested in WB application(s). This antibody reacts with Human, Mouse.
Application	WB
Clonality	Polyclonal
Formulation	Purified polyclonal antibody supplied in PBS with 0.09% (W/V) sodium azide.
Storage Instructions	Maintain refrigerated at 2-8°C for up to 2 weeks. For long-term storage, store at -20°C in small aliquots to prevent freeze-thaw cycles.
Host	Rabbit
Uniprot ID	Q9BQA5

### Technical Details

Immunogen	This HINFP antibody is generated from rabbits immunized with a KLH conjugated synthetic peptide between 317-346 amino acids from the Central region of human HINFP.
Predicted Reactive Species	Monkey
Isotype	Rabbit IgG
Purification	This antibody is purified through a protein A column, followed by peptide affinity purification.
Suggested Dilutions	WB: 1:1000

## Anti-HINFP Antibody (Center) (A07517) Images



HINFP Antibody (Center) western blot analysis in 293 cell line, human placenta, mouse brain and spleen tissue lysates (35ug/lane). This demonstrates the HINFP antibody detected the HINFP protein (arrow).

### Submit a product review to Biocompare.com

Submit a review of this product to Biocompare.com to receive a \$20 Amazon.com giftcard! Your reviews help your fellow scientists make the right decisions. Thank you for your contribution.



Anti-HINFP Antibody (Center)

For Research Use Only. Not for use in diagnostic procedures.