

Anti-Cadherin-16 (M810) CDH16 Antibody

Catalog Number: A07518-1

About CDH16

Serine/threonine-protein kinase which is an important downstream effector of CDC42 and plays a role in the regulation of cytoskeleton reorganization and cell migration. Regulates actin cytoskeletal reorganization via phosphorylation of PPP1R12C and MYL9/MLC2. In concert with MYO18A and LURAP1, is involved in modulating lamellar actomyosin retrograde flow that is crucial to cell protrusion and migration. Phosphorylates PPP1R12A.

Nakajima D., DNA Res. 9:99-106(2002).

Olsen J.V., Cell 127:635-648(2006).

Hirosawa M., DNA Res. 6:329-336(1999).

Overview

Product Name	Anti-Cadherin-16 (M810) CDH16 Antibody
Reactive Species	Human, Mouse, Rat
Description	Boster Bio Anti-Cadherin-16 (M810) CDH16 Antibody catalog # A07518-1. Tested in IHC,IF applications. This antibody reacts with Human,Mouse,Rat.
Application	IF, IHC
Clonality	Polyclonal
Formulation	Rabbit IgG, 1mg/ml in PBS with 0.02% sodium azide, 50% glycerol, pH7.2
Storage Instructions	Store at -20°C for one year. For short term storage and frequent use, store at 4°C for up to one month. Avoid repeated freeze-thaw cycles.
Host	Rabbit
Uniprot ID	O75309

Technical Details

Immunogen	Synthesized peptide derived from human AChRbeta1
Predicted Reactive Species	Chimpanzee, Drosophila, Macaque
Isotype	IgG
Form	Liquid
Concentration	1 mg/ml
Purification	The antibody was affinity-purified from rabbit antiserum by affinity-chromatography using epitope-

specific immunogen and the purity is > 95% (by SDS-PAGE).

Suggested Dilutions

Dilute the sample so that the expected range of concentrations fall within the detection range of this kit.

If the expected range of concentration is unknown, a pilot test should be conducted to decide the optimal dilution ratio for your samples.

Some PubMed article(s) citing the expression level of this target are as follows:

Boster Bio's internal QC testing used:

IHC: 1:50-1:200

IF: 1:50-1:200

Anti-Cadherin-16 (M810) CDH16 Antibody (A07518-1) Images

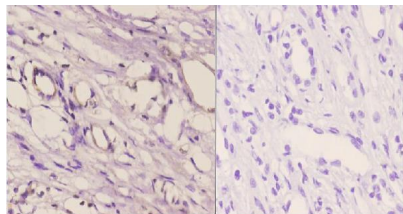


Figure 1. Immunohistochemistry validation of CDH16 using Anti-Cadherin-16 (M810) CDH16 Antibody (A07518-1).

Immunohistochemistry (IHC) analyzes of Cadherin-16 (M810) pAb in paraffin-embedded human kidney carcinoma tissue at 1:50, showing cell membrane staining. Negative control (the right) Using PBS instead of primary antibody

Submit a product review to Biocompare.com

Submit a review of this product to Biocompare.com to receive a \$20 Amazon.com giftcard! Your reviews help your fellow scientists make the right decisions. Thank you for your contribution.



Anti-Cadherin-16 (M810) CDH16 Antibody