

Anti-Thioredoxin-like protein 1 TXNL1 Antibody

Catalog Number: A07528

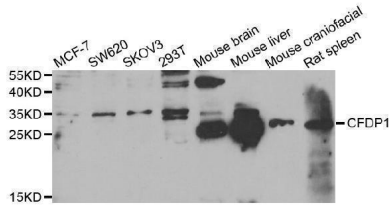
Overview

Product Name	Anti-Thioredoxin-like protein 1 TXNL1 Antibody
Reactive Species	Human, Mouse, Rat
Description	Boster Bio Anti-Thioredoxin-like protein 1 TXNL1 Antibody catalog # A07528. Tested in WB,IHC,ICC/IF applications. This antibody reacts with Human,Mouse,Rat.
Application	IF, IHC, ICC, WB
Clonality	Polyclonal
Formulation	Rabbit IgG, 1mg/ml in PBS with 0.02% sodium azide, 50% glycerol, pH7.2
Storage Instructions	Store at -20°C for one year. For short term storage and frequent use, store at 4°C for up to one month. Avoid repeated freeze-thaw cycles.
Host	Rabbit
Uniprot ID	O43396

Technical Details

Immunogen	Recombinant fusion protein of human TXNL1(NP_004777.1).
Isotype	IgG
Form	Liquid
Concentration	1 mg/ml
Purification	The antibody was affinity-purified from rabbit antiserum by affinity-chromatography using epitope-specific immunogen and the purity is > 95% (by SDS-PAGE).
Suggested Dilutions	WB: 1:500-1:2000 IHC: 1:50-1:200 ICC/IF: 1:50-1:200

Anti-Thioredoxin-like protein 1 TXNL1 Antibody (A07528) Images



Western blotting validation for Anti-Thioredoxin-like protein 1 TXNL1 Antibody A07528 Western blot (WB) analysis of TXNL1 polyclonal antibody at 1:1000 dilution Lane1:HepG2 whole cell lysate(40ug) Lane2:A549 whole cell lysate(40ug) Lane3:The Spleen tissue lysate of Mouse(40ug) Lane4:The Spleen tissue lysate of Rat(40ug) Electrophoresis was performed on a SDS-PAGE gel. To determine SDS-PAGE gel concentration

Submit a product review to Biocompare.com

Submit a review of this product to Biocompare.com to receive a \$20 Amazon.com giftcard! Your reviews help your fellow scientists make the right decisions. Thank you for your contribution.



Anti-Thioredoxin-like protein 1 TXNL1 Antibody

For Research Use Only. Not for use in diagnostic procedures.