

Anti-SKA3 Antibody

Catalog Number: A07561

About SKA3

Upon entry into mitosis, the cell's microtubule (MT) network forms the mitotic spindle, allowing the segregation of paired chromosomes. Proteinaceous structures on centromeric chromatin termed kinetochores (KT) are essential for the proper attachment of the chromosomes to the spindle MTs. A recently discovered spindle and kinetochore complex, comprised of proteins SKA1, SKA2, and SKA3, has been found to be required for stable KT-MT interactions and timely anaphase onset. Like with SKA1 or SKA2, depletion of SKA3 by siRNA delays anaphase transition, resulting in a prolonged a metaphase-like state. These SKA3-depleted cells accumulate high levels of the checkpoint protein Bub1 at kinetochores, suggesting the SKA complex plays a key role in spindle checkpoint silencing and the maintenance of chromosome cohesion in mitosis.

Overview

Product Name	Anti-SKA3 Antibody
Reactive Species	Human, Mouse, Rat
Description	Boster Bio Anti-SKA3 Antibody (Catalog # A07561). Tested in ELISA, WB applications. This antibody reacts with Human, Mouse, Rat.
Application	ELISA, WB
Clonality	Polyclonal
Formulation	SKA3 Antibody is supplied in PBS containing 0.02% sodium azide.
Storage Instructions	Antibody can be stored at 4°C up to one year. Antibodies should not be exposed to prolonged high temperatures.
Host	Rabbit
Uniprot ID	Q8IX90

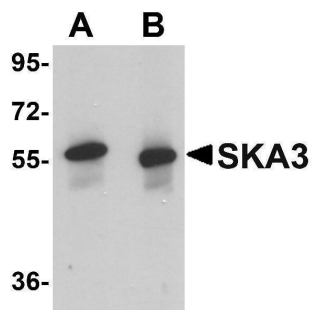
Technical Details

Immunogen	SKA3 antibody was raised against a 13 amino acid synthetic peptide from near the carboxy terminus of human SKA3. The immunogen is located within amino acids 290 - 340 of SKA3.
Predicted Reactive Species	Chicken
Isotype	IgG
Form	Liquid
Concentration	1 mg/mL
Purification	SKA3 Antibody is affinity chromatography purified via peptide column.

Suggested Dilutions

SKA3 antibody can be used for detection of SKA3 by Western blot at 0.5 - 1 ug/mL.
Antibody validated: Western Blot in human samples. All other applications and species not yet tested. Optimal dilutions for each application should be determined by the researcher.

Anti-SKA3 Antibody (A07561) Images



Western blot analysis of SKA3 in human testis tissue lysate with SKA3 antibody at (A) 0.5 and (B) 1 ug/mL.

Submit a product review to Biocompare.com

Submit a review of this product to Biocompare.com to receive a \$20 Amazon.com giftcard! Your reviews help your fellow scientists make the right decisions. Thank you for your contribution.



Anti-SKA3 Antibody

For Research Use Only. Not for use in diagnostic procedures.