

Anti-SMAP2 Antibody Picoband®

Catalog Number: A07564-1

About SMAP2

Predicted to enable GTPase activator activity. Located in cytosol and nucleoplasm.

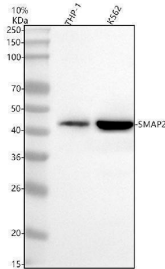
Overview

Product Name	Anti-SMAP2 Antibody Picoband®
Reactive Species	Human
Description	Boster Bio Anti-SMAP2 Antibody Picoband® catalog # A07564-1. Tested in WB, IP, Flow Cytometry, ELISA applications. This antibody reacts with Human. The brand Picoband indicates this is a premium antibody that guarantees superior quality, high affinity, and strong signals with minimal background in Western blot applications. Only our best-performing antibodies are designated as Picoband, ensuring unmatched performance.
Application	ELISA, Flow Cytometry, IP, WB
Clonality	Polyclonal
Formulation	Each vial contains 4 mg Trehalose, 0.9 mg NaCl, 0.2 mg Na ₂ HPO ₄ .
Storage Instructions	At -20°C for one year from date of receipt. After reconstitution, at 4°C for one month. It can also be aliquotted and stored frozen at -20°C for six months. Avoid repeated freezing and thawing.
Host	Rabbit
Uniprot ID	Q8WU79

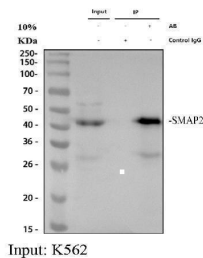
Technical Details

Immunogen	E.coli-derived human SMAP2 recombinant protein (Position: K142-K429). Human SMAP2 shares 94.1% amino acid (aa) sequence identity with mouse SMAP2.
Recommended Detection Systems	Boster recommends Enhanced Chemiluminescent Kit with anti-Rabbit IgG (EK1002) for Western blot.
Form	Lyophilized
Concentration	Adding 0.2 ml of distilled water will yield a concentration of 500 ug/ml.
Purification	Immunogen affinity purified.
Suggested Dilutions	Western blot, 0.25-0.5 ug/ml, Human Immunoprecipitation, 0.5-2 ug/ml, Human Flow Cytometry (Fixed), 1-3 ug/1x10 ⁶ cells, Human ELISA, 0.1-0.5 ug/ml

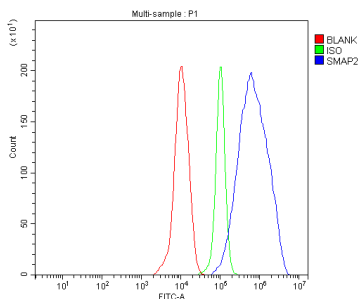
Anti-SMAP2 Antibody Picoband® (A07564-1) Images



Western blot analysis of SMAP2 using anti-SMAP2 antibody (A07564-1). Electrophoresis was performed on a 10% SDS-PAGE gel at 80V (Stacking gel) / 120V (Resolving gel) for 2 hours. The sample well of each lane was loaded with 30 ug of sample under reducing conditions. Lane 1: human THP-1 whole cell lysates, Lane 2: human K562 whole cell lysates. After electrophoresis, proteins were transferred to a nitrocellulose membrane at 150 mA for 50-90 minutes. Blocked the membrane with 5% non-fat milk/TBS for 1.5 hour at RT. The membrane was incubated with rabbit anti-SMAP2 antigen affinity purified polyclonal antibody (A07564-1) at 0.5 ug/mL overnight at 4°C, then washed with TBS-0.1% Tween 3 times with 5 minutes each and probed with a goat anti-rabbit IgG-HRP secondary antibody at a dilution of 1:5000 for 1.5 hour at RT. The signal is developed using an ECL Plus Western Blotting Substrate (Catalog # AR1196-200) with Tanon 5200 system. A specific band was detected for SMAP2 at approximately 47 kDa. The expected band size for SMAP2 is at 47 kDa.



Immunoprecipitating (IP) SMAP2 in K562 whole cell lysate. Western blot analysis of SMAP2 using anti-SMAP2 antibody (A07564-1); Lane 1: K562 whole cell lysates (30ug); Lane 2: Rabbit control IgG instead of anti-SMAP2 antibody in K562 whole cell lysate; Lane 3: anti-SMAP2 antibody (2ug) + K562 whole cell lysate (500ug). After electrophoresis, proteins were transferred to a membrane. Then the membrane was incubated with rabbit anti-SMAP2 antigen affinity purified polyclonal antibody (A07564-1) at a dilution of 0.5 ug/mL and probed with a mouse anti-rabbit IgG-HRP secondary antibody (Catalog # BM2007). The signal is developed using ECL Plus Western Blotting Substrate (Catalog # AR1196-200). A specific band was detected for SMAP2 at approximately 47 kDa. The expected band size for SMAP2 is at 47 kDa.



Flow Cytometry analysis of THP-1 cells using anti-SMAP2 antibody (A07564-1). Overlay histogram showing THP-1 cells stained with A07564-1 (Blue line). To facilitate intracellular staining, cells were fixed with 4% paraformaldehyde and permeabilized with permeabilization buffer. The cells were blocked with 10% normal goat serum. And then incubated with rabbit anti-SMAP2 Antibody (A07564-1, 1 ug/1x10⁶ cells) for 30 min at 20°C. DyLight®488 conjugated goat anti-rabbit IgG (BA1127, 5-10 ug/1x10⁶ cells) was used as secondary antibody for 30 minutes at 20°C. Isotype control antibody (Green line) was rabbit IgG (1 ug/1x10⁶) used under the same conditions. Unlabelled sample without incubation with primary antibody and secondary antibody (Red line) was used as a blank control.

Submit a review of this product to Biocompare.com to receive a \$20 Amazon.com giftcard! Your reviews help your fellow scientists make the right decisions. Thank you for your contribution.



Anti-SMAP2 Antibody

For Research Use Only. Not for use in diagnostic procedures.