

Anti-IL-26 Antibody

Catalog Number: A07565

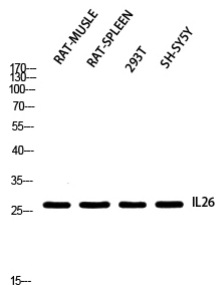
Overview

Product Name	Anti-IL-26 Antibody
Reactive Species	Human
Description	Boster Bio Anti-IL-26 Antibody catalog # A07565. Tested in WB, ELISA applications. This antibody reacts with Human.
Application	ELISA, WB
Clonality	Polyclonal
Formulation	Liquid in PBS containing 50% glycerol, 0.5% stabilizing protein and 0.02% sodium azide. This antibody is supplied in a stabilized formulation. Compatibility with conjugation reactions depends on the chemistry of the conjugation method used. For conjugation methods that are not compatible with the stabilizing components present in this formulation, a carrier-free antibody format is required.
Storage Instructions	Store at -20°C for one year. For short term storage and frequent use, store at 4°C for up to one month. Avoid repeated freeze-thaw cycles.
Host	Rabbit
Uniprot ID	Q9NPH9

Technical Details

Immunogen	Synthesized peptide derived from Interleukin-26 at AA range: 21-70
Isotype	IgG
Form	Liquid
Concentration	1 mg/ml
Purification	Immunogen affinity purified
Suggested Dilutions	WB 1:500-1:2000 ELISA 1:10000

Anti-IL-26 Antibody (A07565) Images



Western blot analysis of RAT-MUSCLE RAT-SPLEEN 293T SH-SY5Y using IL26 antibody. Antibody was diluted at 1:2000. Secondary antibody was diluted at 1:20000

Submit a product review to Biocompare.com

Submit a review of this product to Biocompare.com to receive a \$20 Amazon.com giftcard! Your reviews help your fellow scientists make the right decisions. Thank you for your contribution.



Anti-IL-26 Antibody

For Research Use Only. Not for use in diagnostic procedures.