

## Anti-RTCD1 RTCA Antibody

Catalog Number: A07570

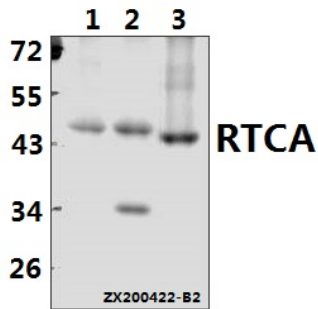
### Overview

Product Name	Anti-RTCD1 RTCA Antibody
Reactive Species	Human, Rat
Description	Boster Bio Anti-RTCD1 RTCA Antibody catalog # A07570. Tested in WB,IHC applications. This antibody reacts with Human,Rat.
Application	IHC, WB
Clonality	Polyclonal
Formulation	Rabbit IgG, 1mg/ml in PBS with 0.02% sodium azide, 50% glycerol, pH7.2
Storage Instructions	Store at -20°C for one year. For short term storage and frequent use, store at 4°C for up to one month. Avoid repeated freeze-thaw cycles.
Host	Rabbit
Uniprot ID	O00442

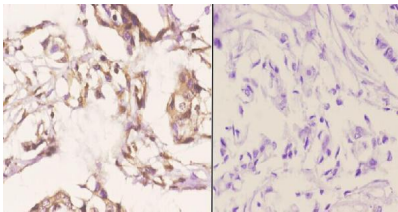
### Technical Details

Immunogen	Synthetic peptide, corresponding to amino acids 321-366 of Human RTCD1.
Isotype	IgG
Form	Liquid
Concentration	1 mg/ml
Purification	The antibody was affinity-purified from rabbit antiserum by affinity-chromatography using epitope-specific immunogen and the purity is > 95% (by SDS-PAGE).
Suggested Dilutions	WB: 1:500-1:1000 IHC: 1:50-1:200

## Anti-RTCD1 RTCA Antibody (A07570) Images



Western blot (WB) analysis of RTCA pAb at 1:500 dilution  
Lane1:SGC7901 whole cell lysate(40ug) Lane2:Panc1 whole cell lysate(40ug) Lane3:C6 whole cell lysate(40ug)



Immunohistochemistry (IHC) analyzes of RTCD1 pAb in paraffin-embedded human breast carcinoma tissue at 1:50, showing cytoplasmic and nucleus staining. Negative control (the right) Using PBS instead of primary antibody, secondary antibody is Goat Anti-Rabbit IgG-biotin followed by avidin-peroxidase.

### Submit a product review to [Biocompare.com](https://www.biocompare.com)

Submit a review of this product to [Biocompare.com](https://www.biocompare.com) to receive a \$20 Amazon.com giftcard! Your reviews help your fellow scientists make the right decisions. Thank you for your contribution.



### Anti-RTCD1 RTCA Antibody

For Research Use Only. Not for use in diagnostic procedures.