

## Anti-RTCD1/RTCA Antibody Picoband®

Catalog Number: A07570-1

### About RTCA

This gene encodes a member of the RNA 3'-phosphate cyclase family. The encoded protein plays a role in RNA metabolism by catalyzing the ATP-dependent conversion of the 3'-phosphate of RNA substrates to a 2',3'-cyclic phosphodiester. Alternatively spliced transcript variants encoding multiple isoforms have been observed for this gene.

### Overview

Product Name	Anti-RTCD1/RTCA Antibody Picoband®
Reactive Species	Human
Description	Boster Bio Anti-RTCD1/RTCA Antibody Picoband® catalog # A07570-1. Tested in ELISA, Flow Cytometry, IF, ICC, WB applications. This antibody reacts with Human. The brand Picoband indicates this is a premium antibody that guarantees superior quality, high affinity, and strong signals with minimal background in Western blot applications. Only our best-performing antibodies are designated as Picoband, ensuring unmatched performance.
Application	ELISA, Flow Cytometry, IF, ICC, WB
Clonality	Polyclonal
Formulation	Each vial contains 4mg Trehalose, 0.9mg NaCl and 0.2mg Na <sub>2</sub> HPO <sub>4</sub> .
Storage Instructions	Store at -20°C for one year from date of receipt. After reconstitution, at 4°C for one month. It can also be aliquotted and stored frozen at -20°C for six months. Avoid repeated freeze-thaw cycles.
Host	Rabbit
Uniprot ID	O00442

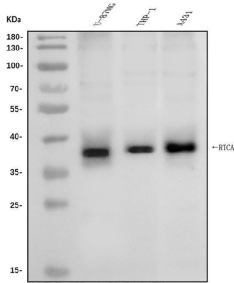
### Technical Details

Immunogen	E.coli-derived human RTCD1/RTCA recombinant protein (Position: Q18-L366).
Recommended Detection Systems	Boster recommends Enhanced Chemiluminescent Kit with anti-Rabbit IgG (EK1002) for Western blot, and HRP Conjugated anti-Rabbit IgG Super Vision Assay Kit (SV0002-1) for ICC.
Cross Reactivity	No cross-reactivity with other proteins.
Isotype	Rabbit IgG
Form	Lyophilized
Concentration	Adding 0.2 ml of distilled water will yield a concentration of 500 ug/ml.
Purification	Immunogen affinity purified.

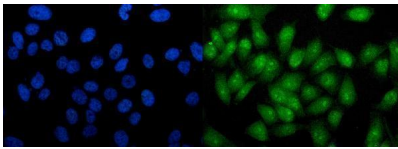
Suggested Dilutions

Western blot, 0.25-0.5ug/ml, Human  
Immunocytochemistry/Immunofluorescence, 5ug/ml, Human  
Flow Cytometry (Fixed), 1-3ug/1x10<sup>6</sup> cells, Human  
ELISA, 0.1-0.5ug/ml, -

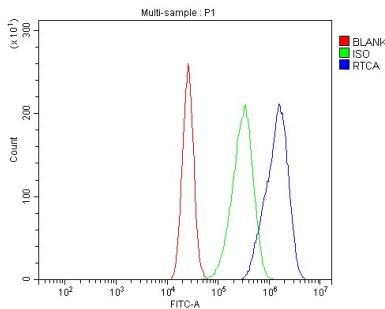
## Anti-RTCD1/RTCA Antibody Picoband® (A07570-1) Images



Western blot analysis of RTCD1/RTCA using anti-RTCD1/RTCA antibody (A07570-1). Electrophoresis was performed on a 5-20% SDS-PAGE gel at 70V (Stacking gel) / 90V (Resolving gel) for 2-3 hours. The sample well of each lane was loaded with 30ug of sample under reducing conditions. Lane 1: human U-87MG whole cell lysates, Lane 2: human THP-1 whole cell lysates, Lane 3: human A431 whole cell lysates. After Electrophoresis, proteins were transferred to a Nitrocellulose membrane at 150mA for 50-90 minutes. Blocked the membrane with 5% Non-fat Milk/TBS for 1.5 hour at RT. The membrane was incubated with rabbit anti-RTCD1/RTCA antigen affinity purified polyclonal antibody (Catalog # A07570-1) at 0.5 ug/mL overnight at 4°C, then washed with TBS-0.1%Tween 3 times with 5 minutes each and probed with a goat anti-rabbit IgG-HRP secondary antibody at a dilution of 1:5000 for 1.5 hour at RT. The signal is developed using an Enhanced Chemiluminescent detection (ECL) kit (Catalog # EK1002) with Tanon 5200 system. A specific band was detected for RTCD1/RTCA at approximately 39KD. The expected band size for RTCD1/RTCA is at 39KD.



IF analysis of RTCD1/RTCA using anti-RTCD1/RTCA antibody (A07570-1). RTCD1/RTCA was detected in immunocytochemical section of PC-3 cells. Enzyme antigen retrieval was performed using IHC enzyme antigen retrieval reagent (AR0022) for 15 mins. The cells were blocked with 10% goat serum. And then incubated with 5ug/mL rabbit anti-RTCD1/RTCA Antibody (A07570-1) overnight at 4°C. DyLight®488 Conjugated Goat Anti-Rabbit IgG (BA1127) was used as secondary antibody at 1:100 dilution and incubated for 30 minutes at 37°C. The section was counterstained with DAPI. Visualize using a fluorescence microscope and filter sets appropriate for the label used.



Flow Cytometry analysis of CACO-2 cells using anti-RTCD1/RTCA antibody (A07570-1). Overlay histogram showing CACO-2 cells stained with A07570-1 (Blue line). To facilitate intracellular staining, cells were fixed with 4% paraformaldehyde and permeabilized with permeabilization buffer. The cells were blocked with 10% normal goat serum. And then incubated with rabbit anti-RTCD1/RTCA Antibody (A07570-1, 1ug/1x10<sup>6</sup> cells) for 30 min at 20°C. DyLight®488 conjugated goat anti-rabbit IgG (BA1127, 5-10ug/1x10<sup>6</sup> cells) was used as secondary antibody for 30 minutes at 20°C. Isotype control antibody (Green line) was rabbit IgG (1ug/1x10<sup>6</sup>) used under the same conditions. Unlabelled sample without incubation with primary antibody and secondary antibody (Red line) was used as a blank control.

Submit a review of this product to Biocompare.com to receive a \$20 Amazon.com giftcard! Your reviews help your fellow scientists make the right decisions. Thank you for your contribution.



### Anti-RTCD1/RTCA Antibody

For Research Use Only. Not for use in diagnostic procedures.