

Anti-PSMA1 Antibody

Catalog Number: A07591

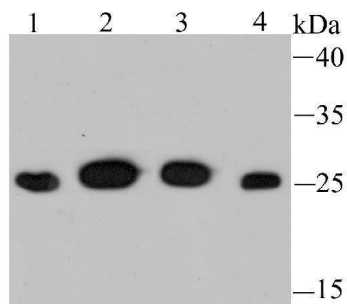
Overview

Product Name	Anti-PSMA1 Antibody
Reactive Species	Human, Mouse, Rat
Description	Boster Bio Anti-PSMA1 Antibody catalog # A07591. Tested in WB,ICC/IF,IHC,IP,Flow Cytometry applications. This antibody reacts with Human,Mouse,Rat.
Application	Flow Cytometry, IP, IF, IHC, ICC, WB
Clonality	Polyclonal
Formulation	Rabbit IgG, 1mg/ml in PBS with 0.02% sodium azide, 50% glycerol, pH7.2
Storage Instructions	Store at -20°C for one year. For short term storage and frequent use, store at 4°C for up to one month. Avoid repeated freeze-thaw cycles.
Host	Rabbit
Uniprot ID	P25786

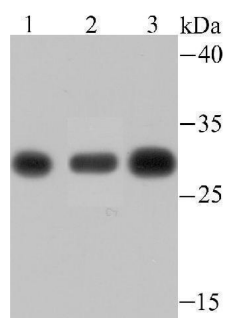
Technical Details

Immunogen	Recombinant protein
Isotype	IgG
Form	Liquid
Concentration	1 mg/ml
Purification	ProA affinity purified
Suggested Dilutions	WB: 1:500-1:2,000 ICC: 1:200-1:1,000 IHC: 1:50-1:200 FC: 1:50-1:100

Anti-PSMA1 Antibody (A07591) Images



Western blot analysis of PSMA1 on different cell lysates using anti-PSMA1 antibody at 1/500 dilution. Positive control: Lane 1: Jurkat Lane 2: Hela Lane 3: HepG2 Lane 4: 293



Western blot analysis of PSMA1 on different lysates using anti-PSMA1 antibody at 1/500 dilution. Positive control: Lane 1: PC-12 Lane 2: Mouse spleen tissue Lane 3: Rat spleen tissue

Submit a product review to Biocompare.com

Submit a review of this product to Biocompare.com to receive a \$20 Amazon.com giftcard! Your reviews help your fellow scientists make the right decisions. Thank you for your contribution.



Anti-PSMA1 Antibody

For Research Use Only. Not for use in diagnostic procedures.