

Anti-Phospho-MLK1/2 (T312/266) MAP3K9 Antibody

Catalog Number: A07599T312

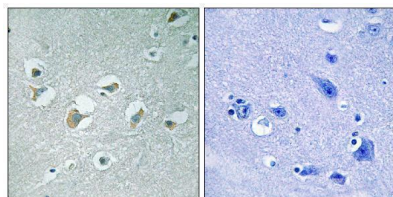
Overview

Product Name	Anti-Phospho-MLK1/2 (T312/266) MAP3K9 Antibody
Reactive Species	Human, Mouse
Description	Boster Bio Anti-Phospho-MLK1/2 (T312/266) MAP3K9 Antibody catalog # A07599T312. Tested in IHC, IF, ELISA applications. This antibody reacts with Human, Mouse.
Application	ELISA, IF, IHC
Clonality	Polyclonal
Formulation	Liquid in PBS containing 50% glycerol, 0.5% stabilizing protein and 0.02% sodium azide. This antibody is supplied in a stabilized formulation. Compatibility with conjugation reactions depends on the chemistry of the conjugation method used. For conjugation methods that are not compatible with the stabilizing components present in this formulation, a carrier-free antibody format is required.
Storage Instructions	Store at -20°C for one year. For short term storage and frequent use, store at 4°C for up to one month. Avoid repeated freeze-thaw cycles.
Host	Rabbit
Uniprot ID	P80192

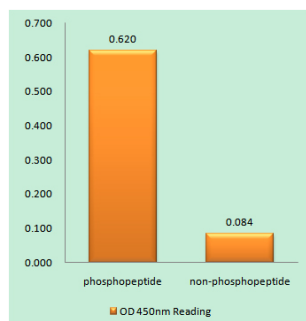
Technical Details

Immunogen	The antiserum was produced against synthesized peptide derived from human MLK1/2 around the phosphorylation site of Thr312/266. AA range:281-330
Isotype	IgG
Form	Liquid
Concentration	1 mg/ml
Purification	The antibody was affinity-purified from rabbit antiserum by affinity-chromatography using epitope-specific immunogen.
Suggested Dilutions	IHC 1:100-1:300 ELISA 1:5000 IF 1:50-200

Anti-Phospho-MLK1/2 (T312/266) MAP3K9 Antibody (A07599T312) Images



Immunohistochemistry analysis of paraffin-embedded human brain, using MLK1/2 (Phospho-Thr312/266) Antibody. The picture on the right is blocked with the phospho peptide.



Enzyme-Linked Immunosorbent Assay (Phospho-ELISA) for Immunogen Phosphopeptide (Phospho-left) and Non-Phosphopeptide (Phospho-right), using MLK1/2 (Phospho-Thr312/266) Antibody

Submit a product review to Biocompare.com

Submit a review of this product to Biocompare.com to receive a \$20 Amazon.com giftcard! Your reviews help your fellow scientists make the right decisions. Thank you for your contribution.



Anti-Phospho-MLK1/2 (T312/266) MAP3K9 Antibody

For Research Use Only. Not for use in diagnostic procedures.