

## Anti-Storkhead-box protein 1 STOX1 Antibody

Catalog Number: A07602

### About STOX1

STOX1 (Storkhead box 1), also known as PEE4 or C10orf24, is a winged-helix domain containing transcription factor believed to play a role in the differentiation of stem cells. As a DNA-binding protein, STOX1 exists as three alternatively spliced isoforms, designated A, B and C, all of which localize to either the cytoplasm or the nucleus. Defects in STOX1 are the cause of pre-eclampsia/eclampsia 4 (PEE4), also known as gestational proteinuric hypertension. STOX1 was also found to be functionally involved in late-onset Alzheimer's disease.

### Overview

Product Name	Anti-Storkhead-box protein 1 STOX1 Antibody
Reactive Species	Human
Description	Boster Bio Anti-Storkhead-box protein 1 STOX1 Antibody (Catalog # A07602). Tested in ELISA, WB applications. This antibody reacts with Human.
Application	ELISA, WB
Clonality	Polyclonal
Formulation	STOX1 Antibody is supplied in PBS containing 0.02% sodium azide.
Storage Instructions	STOX1 antibody can be stored at 4°C for three months and -20°C, stable for up to one year. Avoid repeated freeze-thaw cycles. Antibodies should not be exposed to prolonged high temperatures.
Host	Rabbit
Uniprot ID	Q6ZVD7

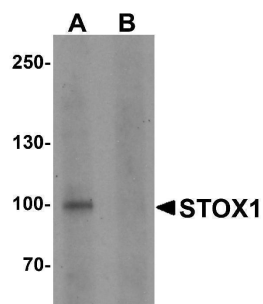
### Technical Details

Immunogen	STOX1 antibody was raised against a 14 amino acid synthetic peptide near the carboxy terminus of human STOX1. The immunogen is located within amino acids 870 - 920 of STOX1.
Predicted Reactive Species	Chicken
Cross Reactivity	STOX1 antibody is human reactive. At least three alternatively spliced transcript variants encoding distinct isoforms have been observed. STOX1 antibody recognize the two longest isoforms.
Isotype	IgG
Form	Liquid
Concentration	1 mg/mL
Purification	STOX1 Antibody is affinity chromatography purified via peptide column.

Suggested Dilutions

STOX1 antibody can be used for detection of STOX1 by Western blot at 1 ug/mL.  
Antibody validated: Western Blot in human samples. All other applications and species not yet tested. Optimal dilutions for each application should be determined by the researcher.

## Anti-Storkhead-box protein 1 STOX1 Antibody (A07602) Images



Western blot analysis of STOX1 in human liver tissue lysate with STOX1 antibody at 1 ug/ml in (A) the absence and (B) the presence of blocking peptide.

### Submit a product review to Biocompare.com

Submit a review of this product to Biocompare.com to receive a \$20 Amazon.com giftcard! Your reviews help your fellow scientists make the right decisions. Thank you for your contribution.



Anti-Storkhead-box protein 1 STOX1 Antibody

For Research Use Only. Not for use in diagnostic procedures.