

Anti-Fanconi anemia group E protein FANCE Antibody

Catalog Number: A07604

About FANCE

Cell surface GPI-bound ligand for Eph receptors, a family of receptor tyrosine kinases which are crucial for migration, repulsion and adhesion during neuronal, vascular and epithelial development. Binds promiscuously Eph receptors residing on adjacent cells, leading to contact-dependent bidirectional signaling into neighboring cells. The signaling pathway downstream of the receptor is referred to as forward signaling while the signaling pathway downstream of the ephrin ligand is referred to as reverse signaling By similarity.

Kozlosky C.J., Oncogene 10:299-306(1995).

Davis S., Science 266:816-819(1994).

Gregory S.G., Nature 441:315-321(2006).

Overview

Product Name	Anti-Fanconi anemia group E protein FANCE Antibody
Reactive Species	Mouse
Description	Boster Bio Anti-Fanconi anemia group E protein FANCE Antibody catalog # A07604. Tested in WB applications. This antibody reacts with Mouse.
Application	WB
Clonality	Polyclonal
Formulation	Rabbit IgG, 1mg/ml in PBS with 0.02% sodium azide, 50% glycerol, pH7.2
Storage Instructions	Store at -20°C for one year. For short term storage and frequent use, store at 4°C for up to one month. Avoid repeated freeze-thaw cycles.
Host	Rabbit
Uniprot ID	Q9HB96

Technical Details

Immunogen	Synthesized peptide derived from human MLK1/2 around the phosphorylation site of T312/266.
Predicted Reactive Species	Chimpanzee, Drosophila, Macaque
Isotype	IgG
Form	Liquid
Concentration	1 mg/ml
Purification	The antibody was affinity-purified from rabbit antiserum by affinity-chromatography using epitope-

specific immunogen and the purity is > 95% (by SDS-PAGE).

Suggested Dilutions

Dilute the sample so that the expected range of concentrations fall within the detection range of this kit.

If the expected range of concentration is unknown, a pilot test should be conducted to decide the optimal dilution ratio for your samples.

Some PubMed article(s) citing the expression level of this target are as follows:

Boster Bio's internal QC testing used:

WB: 1:500-1:2000

Anti-Fanconi anemia group E protein FANCE Antibody (A07604) Images

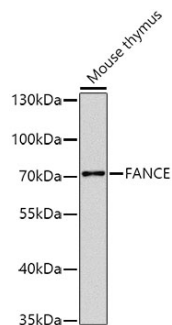


Figure 1. Western blotting validation for Anti-Fanconi anemia group E protein FANCE Antibody A07604

Western blot analysis of extracts of mouse thymus cells

Submit a product review to Biocompare.com

Submit a review of this product to Biocompare.com to receive a \$20 Amazon.com giftcard! Your reviews help your fellow scientists make the right decisions. Thank you for your contribution.



Anti-Fanconi anemia group E protein FANCE Antibody