

Anti-FANCE Rabbit Polyclonal Antibody

Catalog Number: A07604-1

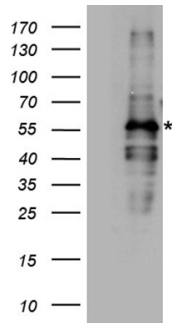
Overview

Product Name	Anti-FANCE Rabbit Polyclonal Antibody
Reactive Species	Human
Description	Boster Bio Rabbit Polyclonal anti-FANCE Antibody. Catalog# A07604-1. Tested in WB. This antibody reacts with Human.
Conjugate	Unconjugated
Application	WB
Clonality	Polyclonal
Formulation	PBS with 0.02% sodium azide, 50% glycerol, pH7.3
Storage Instructions	Store at -20°C for one year. For short term storage and frequent use, store at 4°C for up to one month. Avoid repeated freeze-thaw cycles.
Host	Rabbit
Uniprot ID	Q9HB96

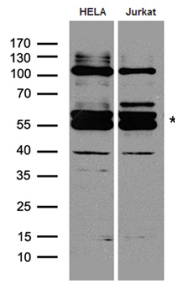
Technical Details

Immunogen	Recombinant protein of human FANCE
Isotype	IgG
Concentration	1.3 mg/ml
Purification	Purified from the immunized serum by affinity chromatography (Protein A/G)

Anti-FANCE Rabbit Polyclonal Antibody (A07604-1) Images



HEK293T cells were transfected with the pCMV6-ENTRY control (Left lane) or pCMV6-ENTRY FANCE (Right lane) cDNA for 48 hrs and lysed. Equivalent amounts of cell lysates (5 ug per lane) were separated by SDS-PAGE and immunoblotted with anti-FANCE rabbit polyclonal antibody.



Western blot analysis of extracts (35ug) from different cell lines and tissues by using anti-FANCE rabbit polyclonal antibody.

Submit a product review to [Biocompare.com](https://www.biocompare.com)

Submit a review of this product to [Biocompare.com](https://www.biocompare.com) to receive a \$20 Amazon.com giftcard! Your reviews help your fellow scientists make the right decisions. Thank you for your contribution.



Anti-FANCE Rabbit Polyclonal Antibody