

## Anti-GDF1 Antibody

Catalog Number: A07609-1

### About GDF1

Growth differentiation factors (GDFs) are members of the transforming growth factor (TGF) superfamily that is involved in embryonic development and adult tissue homeostasis. GDF1 was initially identified as a temporally expressed gene in the mouse central nervous system during embryonic development, with only one isoform detected in adult tissues. GDF1 is required for left-right patterning during development and directly interacts with Nodal, another member of the TGF-beta superfamily. It has been suggested that GDF1 regulates the activity and signaling range of Nodal through direct interaction.

### Overview

Product Name	Anti-GDF1 Antibody
Reactive Species	Human, Mouse, Rat
Description	Boster Bio Anti-GDF1 Antibody (Catalog # A07609-1). Tested in ELISA, WB, IF applications. This antibody reacts with Human, Mouse, Rat.
Application	ELISA, IF, WB
Clonality	Polyclonal
Formulation	GDF1 Antibody is supplied in PBS containing 0.02% sodium azide.
Storage Instructions	GDF1 antibody can be stored at 4°C for three months and -20°C, stable for up to one year. Avoid repeated freeze-thaw cycles. Antibodies should not be exposed to prolonged high temperatures.
Host	Rabbit
Uniprot ID	P27539

### Technical Details

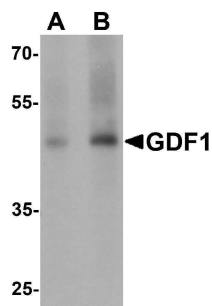
Immunogen	Rabbit polyclonal GDF1 antibody was raised against a 16 amino acid peptide near the amino terminus of human GDF1. The immunogen is located within amino acids 30 - 80 of GDF1.
Predicted Reactive Species	Chicken
Cross Reactivity	GDF1 antibody is predicted to not cross-react with any other members of the growth differentiation factor family.
Isotype	IgG
Form	Liquid
Concentration	1 mg/mL
Purification	GDF1 Antibody is affinity chromatography purified via peptide column.

Suggested Dilutions

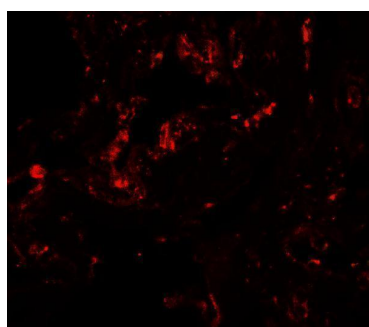
GDF1 antibody can be used for detection of GDF1 by Western blot at 1 - 2 ug/mL. For immunofluorescence start at 20 ug/mL.

Antibody validated: Western Blot in rat samples and Immunofluorescence in human samples. All other applications and species not yet tested. Optimal dilutions for each application should be determined by the researcher.

## Anti-GDF1 Antibody (A07609-1) Images



Western blot analysis of GDF1 in rat lung tissue lysate with GDF1 antibody at (A) 1 and (B) 2 ug/mL.



Immunofluorescence of GDF1 in human lung tissue with GDF1 antibody at 20 ug/mL.

### Submit a product review to Biocompare.com

Submit a review of this product to Biocompare.com to receive a \$20 Amazon.com giftcard! Your reviews help your fellow scientists make the right decisions. Thank you for your contribution.



### Anti-GDF1 Antibody

For Research Use Only. Not for use in diagnostic procedures.