

Anti-Synaptopodin-2 SYNPO2 Antibody

Catalog Number: A07616

About SYNPO2

SYNPO2 was initially identified as myopodin, a member of the synaptopodin family that contains one PPXY motif and multiple PXXP motifs. It colocalizes with alpha-actinin and is found at the Z-disc and during stress conditions will translocate to the nucleus, suggesting that it is part of signaling pathways in addition to its function as a structural protein. SYNPO2 has been shown to bind to calmodulin, alpha-actinin, and smooth muscle myosin and will stimulate actin polymerization in a calmodulin dependent manner, consistent with its proposed role in organizing the cytoskeleton. While deletion of SYNPO2 has been reported to be highly correlated with the invasiveness of prostate cancers, other reports suggest that down-regulation of SYNPO2 reduces the invasiveness and motility of prostate cancer cells.

Overview

Product Name	Anti-Synaptopodin-2 SYNPO2 Antibody
Reactive Species	Human, Mouse
Description	Boster Bio Anti-Synaptopodin-2 SYNPO2 Antibody (Catalog # A07616). Tested in ELISA, WB, IHC-P, IF applications. This antibody reacts with Human, Mouse.
Application	ELISA, IF, IHC-P, WB
Clonality	Polyclonal
Formulation	SYNPO2 Antibody is supplied in PBS containing 0.02% sodium azide.
Storage Instructions	SYNPO2 antibody can be stored at 4°C for three months and -20°C, stable for up to one year. Avoid repeated freeze-thaw cycles. Antibodies should not be exposed to prolonged high temperatures.
Host	Rabbit
Uniprot ID	Q9UMS6

Technical Details

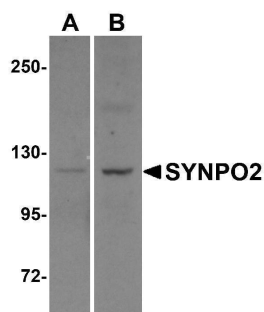
Immunogen	SYNPO2 antibody was raised against a 20 amino acid synthetic peptide near the amino terminus of human SYNPO2. The immunogen is located within amino acids 320 - 370 of SYNPO2.
Predicted Reactive Species	Chicken
Isotype	IgG
Form	Liquid
Concentration	1 mg/mL
Purification	SYNPO2 Antibody is affinity chromatography purified via peptide column.

Suggested Dilutions

SYNPO2 antibody can be used for detection of SYNPO2 by Western blot at 1 ug/mL. Antibody can also be used for immunohistochemistry starting at 5 ug/mL. For immunofluorescence start at 20 ug/mL.

Antibody validated: Western Blot in human samples; Immunohistochemistry in mouse samples and Immunofluorescence in mouse samples. All other applications and species not yet tested. Optimal dilutions for each application should be determined by the researcher.

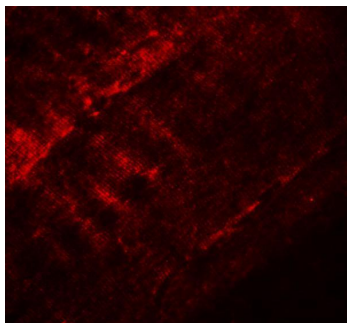
Anti-Synaptopodin-2 SYNPO2 Antibody (A07616) Images



Western blot analysis of SYNPO2 in human skeletal muscle tissue lysate with SYNPO2 antibody at 1 ug/mL in (A) the absence and (B) the presence of blocking peptide.



Immunohistochemistry of SYNPO2 in mouse skeletal muscle tissue with SYNPO2 antibody at 5 ug/mL.



Immunofluorescence of SYNPO2 in mouse skeletal muscle tissue with SYNPO2 antibody at 20 ug/mL.

Submit a product review to [Biocompare.com](https://www.biocompare.com)

Submit a review of this product to [Biocompare.com](https://www.biocompare.com) to receive a \$20 Amazon.com giftcard! Your reviews help your fellow scientists make the right decisions. Thank you for your contribution.



Anti-Synaptopodin-2 SYNPO2 Antibody

For Research Use Only. Not for use in diagnostic procedures.