

## Anti-Kallikrein-15 KLK15 Antibody

Catalog Number: A07646-1

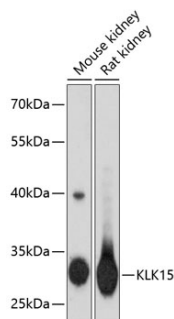
### Overview

|                      |  |
|----------------------|--|
| Product Name         | Anti-Kallikrein-15 KLK15 Antibody  |
| Reactive Species     | Mouse, Rat   |
| Description          | Boster Bio Anti-Kallikrein-15 KLK15 Antibody catalog # A07646-1. Tested in WB applications. This antibody reacts with Mouse,Rat.           |
| Application          | WB   |
| Clonality            | Polyclonal   |
| Formulation          | Rabbit IgG, 1mg/ml in PBS with 0.02% sodium azide, 50% glycerol, pH7.2   |
| Storage Instructions | Store at -20°C for one year. For short term storage and frequent use, store at 4°C for up to one month. Avoid repeated freeze-thaw cycles. |
| Host                 | Rabbit   |
| Uniprot ID           | Q9H2R5   |

### Technical Details

|                     |   |
|---------------------|---|
| Immunogen           | Recombinant fusion protein of human KLK15(NP_059979.2).   |
| Isotype             | IgG   |
| Form                | Liquid  |
| Concentration       | 1 mg/ml   |
| Purification        | The antibody was affinity-purified from rabbit antiserum by affinity-chromatography using epitope-specific immunogen and the purity is > 95% (by SDS-PAGE). |
| Suggested Dilutions | WB: 1:500-1:2000  |

## Anti-Kallikrein-15 KLK15 Antibody (A07646-1) Images



Western blot analysis of extracts of various cell lines, using KLK15 antibody at 1:3000 dilution. Secondary antibody: HRP Goat Anti-Rabbit IgG at 1:10000 dilution. Lysates/proteins: 25ug per lane. Blocking buffer: 3% nonfat dry milk in TBST. Detection: ECL Basic Kit. Exposure time: 30s.

### Submit a product review to Biocompare.com

Submit a review of this product to Biocompare.com to receive a \$20 Amazon.com giftcard! Your reviews help your fellow scientists make the right decisions. Thank you for your contribution.



Anti-Kallikrein-15 KLK15 Antibody

For Research Use Only. Not for use in diagnostic procedures.