

Anti-PP2A (Phospho-Y307) PPP2CB Antibody

Catalog Number: A07661Y307

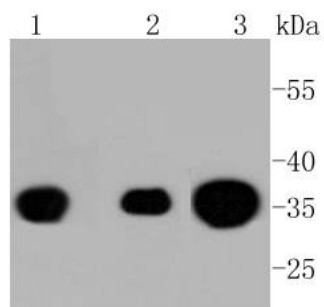
Overview

Product Name	Anti-PP2A (Phospho-Y307) PPP2CB Antibody
Reactive Species	Human, Mouse, Rat
Description	Boster Bio Anti-PP2A (Phospho-Y307) PPP2CB Antibody catalog # A07661Y307. Tested in WB,ICC/IF,IHC,IP applications. This antibody reacts with Human,Mouse,Rat.
Application	IP, IF, IHC, ICC, WB
Clonality	Polyclonal
Formulation	Rabbit IgG, 1mg/ml in PBS with 0.02% sodium azide, 50% glycerol, pH7.2
Storage Instructions	Store at -20°C for one year. For short term storage and frequent use, store at 4°C for up to one month. Avoid repeated freeze-thaw cycles.
Host	Rabbit
Uniprot ID	P62714

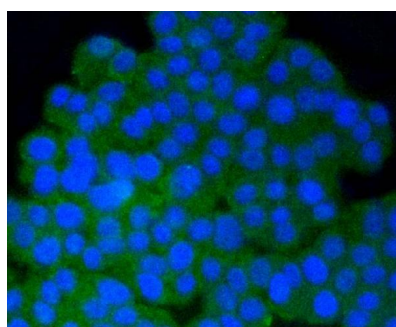
Technical Details

Immunogen	Synthetic phospho-peptide corresponding to residues surrounding Tyr307 of human PP2A.
Isotype	IgG
Form	Liquid
Concentration	1 mg/ml
Purification	ProA affinity purified
Suggested Dilutions	WB: 1:1,000-1:5,000 ICC: 1:50-1:200 IHC: 1:50-1:200

Anti-PP2A (Phospho-Y307) PPP2CB Antibody (A07661Y307) Images



Western blot analysis of Phospho-PP2A(pY307) on different lysates using anti-Phospho-PP2A(pY307) antibody at 1/1,000 dilution. Positive control: Lane 1: A431 Lane 2: F9 Lane 3: PC12



ICC staining Phospho-PP2A(pY307) in PC12 cells (green). The nuclear counter stain is DAPI (blue). Cells were fixed in paraformaldehyde, permeabilised with 0.25% Triton X100/PBS.

Submit a product review to [Biocompare.com](https://www.biocompare.com)

Submit a review of this product to [Biocompare.com](https://www.biocompare.com) to receive a \$20 Amazon.com giftcard! Your reviews help your fellow scientists make the right decisions. Thank you for your contribution.



Anti-PP2A (Phospho-Y307) PPP2CB Antibody

For Research Use Only. Not for use in diagnostic procedures.