

Anti-ERCC6L Antibody Picoband®

Catalog Number: A07663-1

About ERCC6L

This gene encodes a member of the SWItch/Sucrose Non-Fermentable (SWI/SNF2) family of proteins, and contains a SNF2-like ATPase domain and a PICH family domain. One distinguishing feature of this SWI/SNF protein family member is that during interphase, the protein is excluded from the nucleus, and only associates with chromatin after the nuclear envelope has broken down. This protein is a DNA translocase that is thought to bind double-stranded DNA that is exposed to stretching forces, such as those exerted by the mitotic spindle. This protein associates with ribosomal DNA and ultra-fine DNA bridges (UFBs), fine structures that connect sister chromatids during anaphase at some sites such as fragile sites, telomeres and centromeres. This gene is required for the faithful segregation of sister chromatids during mitosis, and the ATPase activity of this protein required for the resolution of UFBs before cytokinesis.

Overview

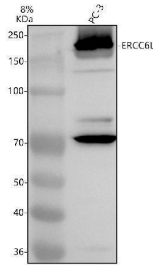
Product Name	Anti-ERCC6L Antibody Picoband®
Reactive Species	Human
Description	Boster Bio Anti-ERCC6L Antibody Picoband® catalog # A07663-1. Tested in WB, ICC/IF, ELISA applications. This antibody reacts with Human. The brand Picoband indicates this is a premium antibody that guarantees superior quality, high affinity, and strong signals with minimal background in Western blot applications. Only our best-performing antibodies are designated as Picoband, ensuring unmatched performance.
Application	ELISA, IF, ICC, WB
Clonality	Polyclonal
Formulation	Each vial contains 4 mg Trehalose, 0.9 mg NaCl, 0.2 mg Na ₂ HPO ₄ .
Storage Instructions	At -20°C for one year from date of receipt. After reconstitution, at 4°C for one month. It can also be aliquotted and stored frozen at -20°C for six months. Avoid repeated freezing and thawing.
Host	Rabbit
Uniprot ID	Q2NKX8

Technical Details

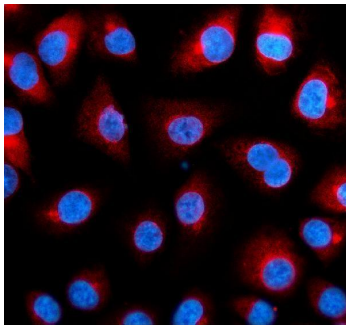
Immunogen	E.coli-derived human ERCC6L recombinant protein (Position: P179-P1127).
Form	Lyophilized
Concentration	Adding 0.2 ml of distilled water will yield a concentration of 500 ug/ml.
Purification	Immunogen affinity purified.
Suggested Dilutions	Western blot, 0.25-0.5 ug/ml, Human

	Immunocytochemistry/Immunofluorescence, 5 ug/ml, Human ELISA, 0.1-0.5 ug/ml
--	--

Anti-ERCC6L Antibody Picoband® (A07663-1) Images



Western blot analysis of ERCC6L using anti-ERCC6L antibody (A07663-1). Electrophoresis was performed on a 8% SDS-PAGE gel at 80V (Stacking gel) / 120V (Resolving gel) for 2 hours. The sample well of each lane was loaded with 30 ug of sample under reducing conditions. Lane 1: human PC-3 whole cell lysates. After electrophoresis, proteins were transferred to a nitrocellulose membrane at 150 mA for 50-90 minutes. Blocked the membrane with 5% non-fat milk/TBS for 1.5 hour at RT. The membrane was incubated with rabbit anti-ERCC6L antigen affinity purified polyclonal antibody (A07663-1) at 0.5 ug/mL overnight at 4°C, then washed with TBS-0.1% Tween 3 times with 5 minutes each and probed with a goat anti-rabbit IgG-HRP secondary antibody at a dilution of 1:5000 for 1.5 hour at RT. The signal is developed using an ECL Plus Western Blotting Substrate (Catalog # AR1196-200) with Tanon 5200 system. A specific band was detected for ERCC6L at approximately 180 kDa. The expected band size for ERCC6L is at 141 kDa.



IF analysis of ERCC6L using anti-ERCC6L antibody (A07663-1). ERCC6L was detected in an immunocytochemical section of A549 cells. Enzyme antigen retrieval was performed using IHC enzyme antigen retrieval reagent (AR0022) for 15 mins. The cells were blocked with 10% goat serum. And then incubated with 5 ug/mL rabbit anti-ERCC6L Antibody (A07663-1) overnight at 4°C. Cy3 Conjugated Goat Anti-Rabbit IgG (BA1032) was used as secondary antibody at 1:500 dilution and incubated for 30 minutes at 37°C. The section was counterstained with DAPI. Visualize using a fluorescence microscope and filter sets appropriate for the label used.

Submit a product review to [Biocompare.com](https://www.biocompare.com)

Submit a review of this product to [Biocompare.com](https://www.biocompare.com) to receive a \$20 Amazon.com giftcard! Your reviews help your fellow scientists make the right decisions. Thank you for your contribution.



Anti-ERCC6L Antibody

For Research Use Only. Not for use in diagnostic procedures.