

## Anti-CARD10 Antibody

Catalog Number: A07686-1

### About CARD10

Apoptosis is related to many diseases and development. Cell death signals are transduced by death domain (DD), death effector domain (DED), and caspase recruitment domain (CARD) containing molecules. CARD containing proteins include some caspases, Apaf-1, CARD4, IAPs, RICK, ARC, RAIDD, Bcl-10, and ASC. A novel CARD-containing protein was recently identified and designated CARD10. This protein belongs to the membrane-associated guanylate kinase-like (MAGUK) family of proteins that can function as molecular scaffolds that assist assembly of signal transduction molecules. CARD 10 interacts with Bcl-10, a Bcl protein that promotes apoptosis, caspase-9 maturation and activation of NF-kappaB. CARD 10 and the related protein CARMA1 also associate with NEMO, the regulatory subunit of the IkkappaK complex, demonstrating its importance in the regulation of NF-kappaB transcription factor activation.

### Overview

|                      |   |
|----------------------|---|
| Product Name         | Anti-CARD10 Antibody  |
| Reactive Species     | Human, Mouse  |
| Description          | Boster Bio Anti-CARD10 Antibody (Catalog # A07686-1). Tested in ELISA, WB, ICC, IF applications. This antibody reacts with Human, Mouse.  |
| Application          | ELISA, IF, ICC, WB  |
| Clonality            | Polyclonal  |
| Formulation          | CARD10 Antibody is supplied in PBS containing 0.02% sodium azide.   |
| Storage Instructions | CARD10 antibody can be stored at 4°C for three months and -20°C, stable for up to one year. Avoid repeated freeze-thaw cycles. Antibodies should not be exposed to prolonged high temperatures. |
| Host                 | Rabbit  |
| Uniprot ID           | Q9BWT7  |

### Technical Details

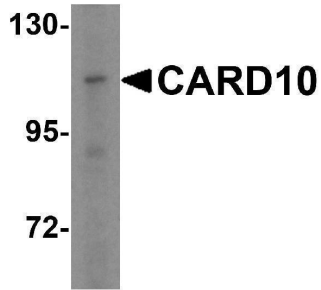
|                            |  |
|----------------------------|--|
| Immunogen                  | CARD10 antibody was raised against a synthetic peptide corresponding to 14 amino acids at the C-terminus of human CARD10. The immunogen is located within the last 50 amino acids of CARD10. |
| Predicted Reactive Species | Chicken  |
| Isotype                    | IgG  |
| Form                       | Liquid   |
| Concentration              | 1 mg/mL  |
| Purification               | CARD10 Antibody is immunoaffinity purified.  |

**Suggested Dilutions**

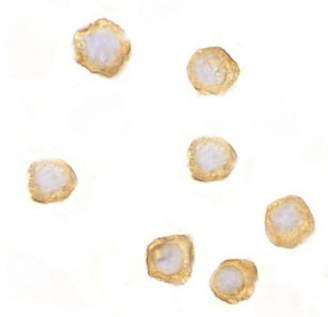
CARD10 antibody can be used for detection of CARD10 by Western blot at 5 ug/mL. Antibody can also be used for immunocytochemistry starting at 10 ug/mL. For immunofluorescence start at 20 ug/mL.

Antibody validated: Western Blot in mouse samples; Immunocytochemistry in mouse samples and Immunofluorescence in mouse samples. All other applications and species not yet tested. Optimal dilutions for each application should be determined by the researcher.

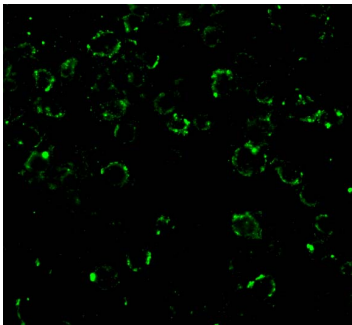
## Anti-CARD10 Antibody (A07686-1) Images



Western blot analysis of CARD10 in A-20 cell lysate with CARD10 antibody at 5 ug/mL.



Immunocytochemistry of CARD10 in EL4 cells with CARD10 antibody at 10 ug/mL.



Immunofluorescence of CARD10 in EL4 cells with CARD10 antibody at 20 ug/mL.

### Submit a product review to [Biocompare.com](https://www.biocompare.com)

Submit a review of this product to [Biocompare.com](https://www.biocompare.com) to receive a \$20 Amazon.com giftcard! Your reviews help your fellow scientists make the right decisions. Thank you for your contribution.



Anti-CARD10 Antibody

For Research Use Only. Not for use in diagnostic procedures.