

Anti-CARMA3 CARD10 Antibody

Catalog Number: A07686-2

About CARD10

CARMA proteins belong to the membrane-associated guanylate kinase-like (MAGUK) family of proteins that can function as molecular scaffolds that assist assembly of signal transduction molecules. CARMA1, CARMA2, and CARMA3 share high degrees of sequence and functional homology, but their tissue-specific distribution suggests that they serve distinct biological functions in different cell types. As with CARMA1, the CARD domain of CARMA3 has been shown to specifically interact with BCL10, a protein known to function as a positive regulator of cell apoptosis and NF-kappaB activation. When expressed in cells, this protein binds to BCL10 and activates NF-kappaB. Recent experiments have shown that CARMA3 is required for EGF-induced NF-kappaB activation and contributes to tumor growth in vivo, suggesting that CARMA3 may serve as a new therapeutic target for the treatment of EGFR-driven tumors.

Overview

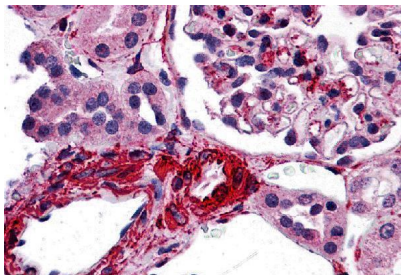
Product Name	Anti-CARMA3 CARD10 Antibody
Reactive Species	Human
Description	Boster Bio Anti-CARMA3 CARD10 Antibody (Catalog # A07686-2). Tested in ELISA, IHC-P applications. This antibody reacts with Human.
Application	ELISA, IHC-P
Clonality	Polyclonal
Formulation	CARMA3 Antibody is supplied in PBS containing 0.02% sodium azide.
Storage Instructions	CARMA3 antibody can be stored at 4°C for three months and -20°C, stable for up to one year. Avoid repeated freeze-thaw cycles. Antibodies should not be exposed to prolonged high temperatures.
Host	Rabbit
Uniprot ID	Q9BWT7

Technical Details

Immunogen	CARMA3 antibody was raised against a 16 amino acid synthetic peptide near the amino terminus of human CARMA3. The immunogen is located within the first 50 amino acids of CARMA3.
Predicted Reactive Species	Mouse
Cross Reactivity	CARMA3 antibody is human specific. At least three isoforms of CARMA3 are known to exist; this antibody will only detect isoform 1. CARMA3 antibody is predicted not to cross-react with other CARMA proteins.
Isotype	IgG
Form	Liquid

Concentration	1 mg/mL
Purification	CARMA3 Antibody is affinity chromatography purified via peptide column.
Suggested Dilutions	CARMA3 antibody can be used for detection of CARMA3 by immunohistochemistry at 5 ug/mL. Antibody validated: Immunohistochemistry in human samples. All other applications and species not yet tested. Optimal dilutions for each application should be determined by the researcher.

Anti-CARMA3 CARD10 Antibody (A07686-2) Images



Immunohistochemistry of CARMA3 in human kidney tissue with CARMA3 antibody at 5 ug/ml

Submit a product review to Biocompare.com

Submit a review of this product to Biocompare.com to receive a \$20 Amazon.com giftcard! Your reviews help your fellow scientists make the right decisions. Thank you for your contribution.



Anti-CARMA3 CARD10 Antibody

For Research Use Only. Not for use in diagnostic procedures.