

## Anti-Sarcalumenin/Srl Antibody Picoband®

Catalog Number: A07699-4

### About Srl

Sarcalumenin is a protein that in humans is encoded by the SRL gene. Predicted to enable GTP binding activity. Acts upstream of or within response to muscle activity involved in regulation of muscle adaptation and store-operated calcium entry. Predicted to be located in membrane and sarcoplasmic reticulum. Predicted to be active in cytoplasm; intracellular membrane-bounded organelle; and plasma membrane. Is expressed in brain ventricular layer; diaphragm; limb; skeletal musculature; and tail mesenchyme. Orthologous to human SRL (sarcalumenin).

### Overview

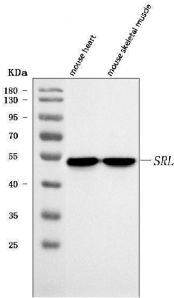
Product Name	Anti-Sarcalumenin/Srl Antibody Picoband®
Reactive Species	Mouse
Description	Boster Bio Anti-Sarcalumenin/Srl Antibody Picoband® catalog # A07699-4. Tested in ELISA, Flow Cytometry, IHC, WB applications. This antibody reacts with Mouse. The brand Picoband indicates this is a premium antibody that guarantees superior quality, high affinity, and strong signals with minimal background in Western blot applications. Only our best-performing antibodies are designated as Picoband, ensuring unmatched performance.
Application	ELISA, Flow Cytometry, IHC, WB
Clonality	Polyclonal
Formulation	Each vial contains 4 mg Trehalose, 0.9 mg NaCl, 0.2 mg Na <sub>2</sub> HPO <sub>4</sub> .
Storage Instructions	At -20°C for one year from date of receipt. After reconstitution, at 4°C for one month. It can also be aliquotted and stored frozen at -20°C for six months. Avoid repeated freezing and thawing.
Host	Rabbit
Uniprot ID	Q7TQ48

### Technical Details

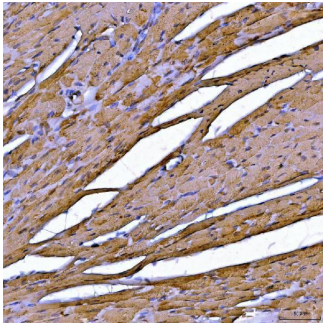
Immunogen	E.coli-derived mouse Sarcalumenin/Srl recombinant protein (Position: R119-M422).
Recommended Detection Systems	Boster recommends Enhanced Chemiluminescent Kit with anti-Rabbit IgG (EK1002) for Western blot, and HRP Conjugated anti-Rabbit IgG Super Vision Assay Kit (SV0002-1) for IHC(P).
Cross Reactivity	No cross-reactivity with other proteins.
Isotype	Rabbit IgG
Form	Lyophilized
Concentration	Adding 0.2 ml of distilled water will yield a concentration of 500 µg/ml.

Purification	Immunogen affinity purified.
Suggested Dilutions	Western blot, 0.25-0.5 ug/ml, Mouse Immunohistochemistry(Paraffin-embedded Section), 2-5 ug/ml, Mouse Flow Cytometry (Fixed), 1-3 ug/1x10 <sup>6</sup> cellsMouse ELISA, 0.1-0.5 ug/ml, -

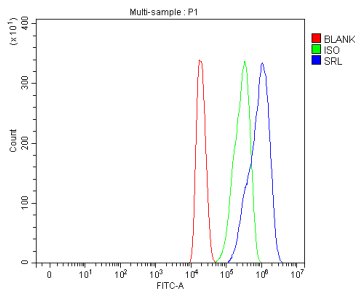
## Anti-Sarcalumenin/Srl Antibody Picoband® (A07699-4) Images



Western blot analysis of Sarcalumenin/Srl using anti-Sarcalumenin/Srl antibody (A07699-4). Electrophoresis was performed on a 5-20% SDS-PAGE gel at 70V (Stacking gel) / 90V (Resolving gel) for 2-3 hours. The sample well of each lane was loaded with 30 ug of sample under reducing conditions. Lane 1: mouse heart tissue lysates, Lane 2: mouse skeletal muscle tissue lysates. After electrophoresis, proteins were transferred to a nitrocellulose membrane at 150 mA for 50-90 minutes. Blocked the membrane with 5% non-fat milk/TBS for 1.5 hour at RT. The membrane was incubated with rabbit anti-Sarcalumenin/Srl antigen affinity purified polyclonal antibody (Catalog # A07699-4) at 0.5 ug/mL overnight at 4°C, then washed with TBS-0.1%Tween 3 times with 5 minutes each and probed with a goat anti-rabbit IgG-HRP secondary antibody at a dilution of 1:5000 for 1.5 hour at RT. The signal is developed using an Enhanced Chemiluminescent detection (ECL) kit (Catalog # EK1002) with Tanon 5200 system. A specific band was detected for Sarcalumenin/Srl at approximately 54 kDa. The expected band size for Sarcalumenin/Srl is at 54 kDa.



IHC analysis of Sarcalumenin/Srl using anti-Sarcalumenin/Srl antibody (A07699-4). Sarcalumenin/Srl was detected in a paraffin-embedded section of mouse cardiac muscle tissue. Heat mediated antigen retrieval was performed in EDTA buffer (pH 8.0, epitope retrieval solution). The tissue section was blocked with 10% goat serum. The tissue section was then incubated with 2 ug/ml rabbit anti-Sarcalumenin/Srl Antibody (A07699-4) overnight at 4°C. Peroxidase Conjugated Goat Anti-rabbit IgG was used as secondary antibody and incubated for 30 minutes at 37°C. The tissue section was developed using HRP Conjugated Rabbit IgG Super Vision Assay Kit (Catalog # SV0002) with DAB as the chromogen.



Flow Cytometry analysis of HEPA1-6 cells using anti-Sarcalumenin/Srl antibody (A07699-4). Overlay histogram showing HEPA1-6 cells stained with A07699-4 (Blue line). The cells were fixed with 4% paraformaldehyde and blocked with 10% normal goat serum. And then incubated with rabbit anti-Sarcalumenin/Srl Antibody (A07699-4, 1 ug/1x10<sup>6</sup> cells) for 30 min at 20°C. DyLight®488 conjugated goat anti-rabbit IgG (BA1127, 5-10 ug/1x10<sup>6</sup> cells) was used as secondary antibody for 30 minutes at 20°C. Isotype control antibody (Green line) was rabbit IgG (1 ug/1x10<sup>6</sup>) used under the same conditions. Unlabelled sample without incubation with primary antibody and secondary antibody (Red line) was used as a blank control.

Submit a review of this product to Biocompare.com to receive a \$20 Amazon.com giftcard! Your reviews help your fellow scientists make the right decisions. Thank you for your contribution.



### Anti-Sarcalumenin/SrI Antibody

For Research Use Only. Not for use in diagnostic procedures.