

Anti-Proteasome 20S beta 6/PSMB6 Antibody Picoband®

Catalog Number: A07705-1

About PSMB6

Proteasome subunit beta type-6 also known as 20S proteasome subunit beta-1 (based on systematic nomenclature) is a protein that in humans is encoded by the PSMB6 gene. The proteasome is a multicatalytic proteinase complex with a highly ordered ring-shaped 20S core structure. The core structure is composed of 4 rings of 28 non-identical subunits; 2 rings are composed of 7 alpha subunits and 2 rings are composed of 7 beta subunits. Proteasomes are distributed throughout eukaryotic cells at a high concentration and cleave peptides in an ATP/ubiquitin-dependent process in a non-lysosomal pathway. The encoded protein is a member of the proteasome B-type family, also known as the T1B family, and is a 20S core beta subunit in the proteasome. Alternatively spliced transcript variants encoding multiple isoforms have been observed for this gene.

Overview

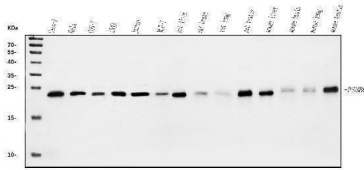
Product Name	Anti-Proteasome 20S beta 6/PSMB6 Antibody Picoband®
Reactive Species	Human, Monkey, Mouse, Rat
Description	Boster Bio Anti-Proteasome 20S beta 6/PSMB6 Antibody Picoband® catalog # A07705-1. Tested in ELISA, Flow Cytometry, WB applications. This antibody reacts with Human, Mouse, Rat. The brand Picoband indicates this is a premium antibody that guarantees superior quality, high affinity, and strong signals with minimal background in Western blot applications. Only our best-performing antibodies are designated as Picoband, ensuring unmatched performance.
Application	ELISA, Flow Cytometry, WB
Clonality	Polyclonal
Formulation	Each vial contains 4mg Trehalose, 0.9mg NaCl, 0.2mg Na2HPO4.
Storage Instructions	Store at -20°C for one year from date of receipt. After reconstitution, at 4°C for one month. It can also be aliquotted and stored frozen at -20°C for six months. Avoid repeated freeze-thaw cycles.
Host	Rabbit
Uniprot ID	P28072

Technical Details

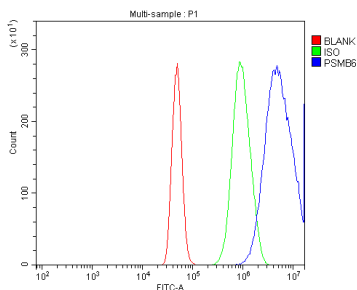
Immunogen	E.coli-derived human PSMB6 recombinant protein (Position: A50-D201).
Recommended Detection Systems	Boster recommends Enhanced Chemiluminescent Kit with anti-Rabbit IgG (EK1002) for Western blot.
Cross Reactivity	No cross-reactivity with other proteins.
Isotype	Rabbit IgG
Form	Lyophilized

Concentration	Adding 0.2 ml of distilled water will yield a concentration of 500 ug/ml.
Purification	Immunogen affinity purified.
Suggested Dilutions	Western blot, 0.25-0.5ug/ml, Human, Mouse, Rat, Monkey Flow Cytometry (Fixed), 1-3ug/1x10 ⁶ cells, Human ELISA, 0.1-0.5ug/ml, -

Anti-Proteasome 20S beta 6/PSMB6 Antibody Picoband® (A07705-1) Images



Western blot analysis of Proteasome 20S Beta 6/PSMB6 using anti-Proteasome 20S Beta 6/PSMB6 antibody (A07705-1). Electrophoresis was performed on a 5-20% SDS-PAGE gel at 70V (Stacking gel) / 90V (Resolving gel) for 2-3 hours. The sample well of each lane was loaded with 30 ug of sample under reducing conditions. Lane 1: human Caco-2 whole cell lysates, Lane 2: human Hela whole cell lysates, Lane 3: monkey COS-7 whole cell lysates, Lane 4: human A549 whole cell lysates, Lane 5: human Jurkat whole cell lysates, Lane 6: human MCF-7 whole cell lysates, Lane 7: rat liver tissue lysates, Lane 8: rat brain tissue lysates, Lane 9: rat lung tissue lysates, Lane 10: rat testis tissue lysates, Lane 11: mouse liver tissue lysates, Lane 12: mouse brain tissue lysates, Lane 13: mouse lung tissue lysates, Lane 14: mouse testis tissue lysates. After electrophoresis, proteins were transferred to a nitrocellulose membrane at 150 mA for 50-90 minutes. Blocked the membrane with 5% non-fat milk/TBS for 1.5 hour at RT. The membrane was incubated with rabbit anti-Proteasome 20S Beta 6/PSMB6 antigen affinity purified polyclonal antibody (Catalog # A07705-1) at 0.5 ug/mL overnight at 4°C, then washed with TBS-0.1%Tween 3 times with 5 minutes each and probed with a goat anti-rabbit IgG-HRP secondary antibody at a dilution of 1:5000 for 1.5 hour at RT. The signal is developed using an Enhanced Chemiluminescent detection (ECL) kit (Catalog # EK1002) with Tanon 5200 system. A specific band was detected for Proteasome 20S Beta 6/PSMB6 at approximately 22 kDa. The expected band size for Proteasome 20S Beta 6/PSMB6 is at 22 kDa.



Flow Cytometry analysis of A431 cells using anti-Proteasome 20S Beta 6/PSMB6 antibody (A07705-1). Overlay histogram showing A431 cells stained with A07705-1 (Blue line). To facilitate intracellular staining, cells were fixed with 4% paraformaldehyde and permeabilized with permeabilization buffer. The cells were blocked with 10% normal goat serum. And then incubated with rabbit anti-Proteasome 20S Beta 6/PSMB6 Antibody (A07705-1, 1 ug/1x10⁶ cells) for 30 min at 20°C. DyLight®488 conjugated goat anti-rabbit IgG (BA1127, 5-10 ug/1x10⁶ cells) was used as secondary antibody for 30 minutes at 20°C. Isotype control antibody (Green line) was rabbit IgG (1 ug/1x10⁶) used under the same conditions. Unlabelled sample without incubation with primary antibody and secondary antibody (Red line) was used as a blank control.

Submit a product review to [Biocompare.com](https://www.biocompare.com)

Submit a review of this product to [Biocompare.com](https://www.biocompare.com) to receive a \$20 Amazon.com giftcard! Your reviews help your fellow scientists make the right decisions. Thank you for your contribution.



Anti-Proteasome 20S beta 6/PSMB6 Antibody

For Research Use Only. Not for use in diagnostic procedures.