

## Anti-ALG6 Antibody

Catalog Number: A07747

### About ALG6

Anti-ALG6 antibody was designed, produced, and validated as part of the Joy Cappel Young Investigator Award (JCYIA). Dolichyl pyrophosphate Man9GlcNAc2 alpha-1,3-glucosyltransferase is an enzyme that is encoded by the ALG6 gene in humans. This gene encodes ALG6/ALG8 member of glucosyltransferase family. The encoded protein catalyzes the addition of the first glucose residue to the growing lipid-linked oligosaccharide precursor of N-linked glycosylation. Mutations in this gene are associated with congenital disorders of glycosylation type. Anti-ALG6 is ideal for researchers interested in Infectious disease, especially HIV and hepatitis virus infections. Anti-ALG6 antibody is applicable to methods for diagnosis and, in particular, to methods for diagnosing infections using biomarkers targeting exosomes secreted in bodily fluids.

### Overview

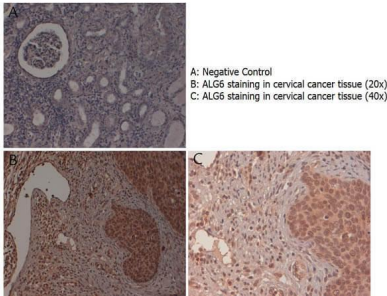
Product Name	Anti-ALG6 Antibody
Reactive Species	Human
Description	Boster Bio Anti-ALG6 Antibody (Catalog # A07747). Tested in ELISA, IHC, WB applications. This antibody reacts with Human.
Application	ELISA, IHC, WB
Clonality	Polyclonal
Formulation	0.02 M Potassium Phosphate, 0.15 M Sodium Chloride, pH 7.2, 0.01% (w/v) Sodium Azide
Storage Instructions	Store vial at -20°C prior to opening. Aliquot contents and freeze at -20°C or below for extended storage. Avoid cycles of freezing and thawing. Centrifuge product if not completely clear after standing at room temperature. This product is stable for several weeks at 4°C as an undiluted liquid. Dilute only prior to immediate use. Expiration date is one (1) year from date of opening. (Ship on dry ice.)
Host	Rabbit
Uniprot ID	Q9Y672

### Technical Details

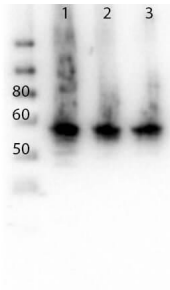
Immunogen	This whole rabbit serum was prepared by repeated immunizations with a synthetic peptide, corresponding to a region near the N-terminus of human ALG6 protein, conjugated to KLH.
Predicted Reactive Species	Chimpanzee, Drosophila, Macaque
Isotype	IgG
Form	Liquid (sterile filtered)
Concentration	80 mg/mL by Refractometry

Purification	ALG6 Antibody antiserum is directed against human ALG6. A 58 kDa band is detected when assayed by immunoblot. Cross-reactivity is expected against human ALG6 protein based on a 100% homology of the amino acid sequence of the immunogen between rat, mouse, drosophila, and pongo abelii.
Suggested Dilutions	ELISA: 1:45,000 IHC: 4µg/mL WB: 1:1000 Anti-ALG6 antibody has been tested in ELISA, western blot, and immunohistochemistry. Specific conditions for reactivity should be optimized by the end user. Expect a band approximately 58kDa in size corresponding to ALG6 protein by Western blotting in the appropriate cell lysate or extract.

## Anti-ALG6 Antibody (A07747) Images



Immunohistochemistry with anti-ALG6 antibody showing ALG6 staining in the squamous epithelium of the uterine cervix as well as in inflammatory elements diffused in the stroma of human cervical cancer tissue at 20x and 40x (B & C). Formalin fixed/paraffin embedded sections were subjected to heat induced epitope retrieval (HIER) at pH 6.2 and then incubated with rabbit anti-human ALG6 antibody at 4.0 µg/ml for 60 minutes. The reaction was developed using MACH 1 universal HRP polymer detection system and visualized with 3'3-diamino-benzidine substrate (DAB).



Western Blot of Rabbit anti-ALG6 antibody. Lane 1: HeLa Whole Cell lysate . Lane 2: MOLT4 Whole Cell lysate . Lane 3: K-562 Whole Cell lysate . Load: 10 µg per lane. Primary antibody: ALG6 antibody at 1:500 for overnight at 4°C. Secondary antibody: Peroxidase rabbit secondary antibody at 1:40,000 for 30 min at RT. Block: TBS-Casein overnight at 4°C. Predicted/Observed size: 58 kDa ALG-6.

## Submit a product review to Biocompare.com

Submit a review of this product to Biocompare.com to receive a \$20 Amazon.com giftcard! Your reviews help your fellow scientists make the right decisions. Thank you for your contribution.



### Anti-ALG6 Antibody

For Research Use Only. Not for use in diagnostic procedures.