

## Anti-Protein atonal homolog 8 ATOH8 Antibody

Catalog Number: A07774

### About ATOH8

Basic helix-loop-helix (bHLH) transcription factors play important roles in differentiation processes during embryonic development of vertebrates. ATOH8 (MATH6) is a tissue-restricted member of the atonal superfamily of bHLH transcription factors that exhibits 43-57% identity in the bHLH domain with other mammalian atonal paralogs including the NeuroD and Neurogenin factors. In the mouse, ATOH8 has been implicated in the specification and differentiation of neuronal cell lineages in the brain and may also participate in kidney development. Recent studies show that ATOH8 is a novel component of the pancreatic transcriptional network during embryonic development and suggest a potential role as a modulator of the differentiation program initiated by the pro-endocrine factor Neurog3. It is indispensable for early embryonic development, suggesting a more widespread function for this factor in tissue-specific differentiation processes that are dependent on class II bHLH genes.

### Overview

Product Name	Anti-Protein atonal homolog 8 ATOH8 Antibody
Reactive Species	Human, Mouse, Rat
Description	Boster Bio Anti-Protein atonal homolog 8 ATOH8 Antibody (Catalog # A07774). Tested in ELISA, WB, IHC-P applications. This antibody reacts with Human, Mouse, Rat.
Application	ELISA, IHC-P, WB
Clonality	Polyclonal
Formulation	ATOH8 Antibody is supplied in PBS containing 0.02% sodium azide.
Storage Instructions	ATOH8 antibody can be stored at 4°C for three months and -20°C, stable for up to one year. Avoid repeated freeze-thaw cycles. Antibodies should not be exposed to prolonged high temperatures.
Host	Rabbit
Uniprot ID	Q96SQ7

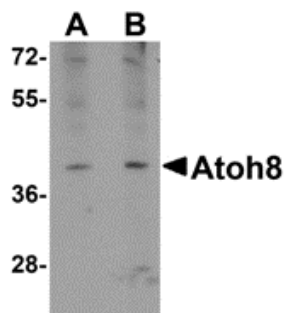
### Technical Details

Immunogen	ATOH8 antibody was raised against a 15 amino acid synthetic peptide near the carboxy terminus of human ATOH8. The immunogen is located within the last 50 amino acids of ATOH8.
Predicted Reactive Species	Bovine
Isotype	IgG
Form	Liquid
Concentration	1 mg/mL
Purification	ATOH8 Antibody is affinity chromatography purified via peptide column.

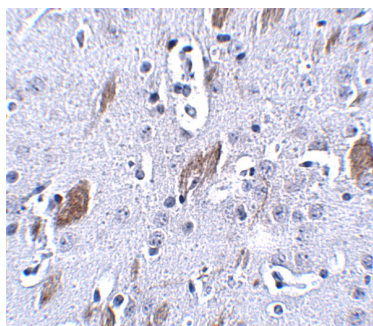
Suggested Dilutions

ATOH8 antibody can be used for detection of ATOH8 by Western blot at 1 - 2 ug/mL. Antibody can also be used for immunohistochemistry starting at 5 ug/mL.  
Antibody validated: Western Blot in mouse samples and Immunohistochemistry in mouse samples. All other applications and species not yet tested. Optimal dilutions for each application should be determined by the researcher.

## Anti-Protein atonal homolog 8 ATOH8 Antibody (A07774) Images



Western blot analysis of ATOH8 in A-20 cell lysate with ATOH8 antibody at (A) 1 and (B) 2 ug/mL.



Immunohistochemistry of ATOH8 in mouse brain tissue with ATOH8 antibody at 5 ug/mL.

### Submit a product review to [Biocompare.com](https://www.biocompare.com)

Submit a review of this product to [Biocompare.com](https://www.biocompare.com) to receive a \$20 Amazon.com giftcard! Your reviews help your fellow scientists make the right decisions. Thank you for your contribution.



Anti-Protein atonal homolog 8 ATOH8 Antibody

For Research Use Only. Not for use in diagnostic procedures.