

## Anti-Kin of IRRE-like protein 2 KIRREL2 Antibody

Catalog Number: A07812

### About KIRREL2

KIRREL2, also known as nephrin-like 3, is a type I transmembrane protein belonging to the immunoglobulin superfamily of cell adhesion molecules (1). KIRREL2 consists of five extracellular Ig-like repeats, a transmembrane domain, several glycosylation sites and a cytoplasmic domain that has a stretch of nine conserved residues (1,2). KIRREL2 has been found to be expressed in beta cells of pancreatic islets and is involved in the regulation of both glomerular and neural development (3,4). Downregulation of KIRREL2 is implicated in several proteinuric diseases (4,5).

### Overview

Product Name	Anti-Kin of IRRE-like protein 2 KIRREL2 Antibody
Reactive Species	Human, Mouse, Rat
Description	Boster Bio Anti-Kin of IRRE-like protein 2 KIRREL2 Antibody (Catalog # A07812). Tested in ELISA, WB, IHC-P, IF applications. This antibody reacts with Human, Mouse, Rat.
Application	ELISA, IF, IHC-P, WB
Clonality	Polyclonal
Formulation	KIRREL2 antibody is supplied in PBS containing 0.02% sodium azide.
Storage Instructions	KIRREL2 antibody can be stored at 4°C for three months and -20°C, stable for up to one year.
Host	Rabbit
Uniprot ID	Q6UWL6

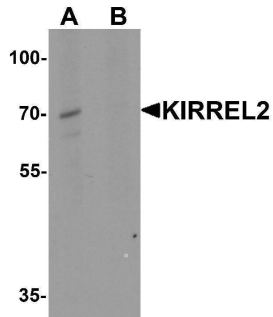
### Technical Details

Immunogen	KIRREL2 antibody was raised against a 17 amino acid peptide near the carboxy terminus of human KIRREL2. The immunogen is located within amino acids 550 - 600 of KIRREL2.
Predicted Reactive Species	Bovine, Rat
Cross Reactivity	KIRREL2 antibody is human, mouse and rat reactive. At least five isoforms are known to exist. This antibody is predicted to not cross-react with other members of the KIRREL protein family.
Isotype	IgG
Form	Liquid
Concentration	1 mg/mL
Purification	KIRREL2 antibody is affinity chromatography purified via peptide column.
Suggested Dilutions	KIRREL2 antibody can be used for detection of KIRREL2 by Western blot at 1 - 2 ug/ml. Antibody

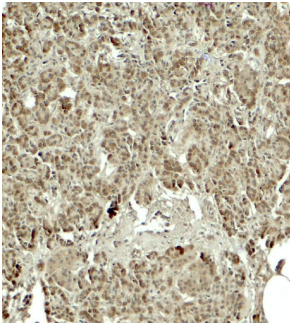
can also be used for immunohistochemistry starting at 5 ug/mL. For immunofluorescence start at 20 ug/mL.

Antibody validated: Western Blot in human samples; Immunohistochemistry in human samples and Immunofluorescence in human samples. All other applications and species not yet tested. Optimal dilutions for each application should be determined by the researcher.

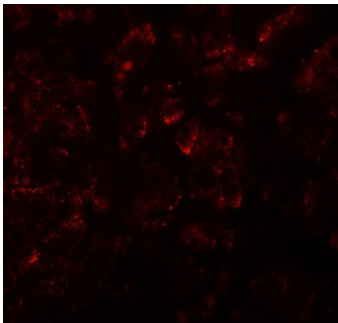
## Anti-Kin of IRRE-like protein 2 KIRREL2 Antibody (A07812) Images



Western blot analysis of KIRREL2 in 293 cell lysate with KIRREL2 antibody at 1 ug/ml in (A) the absence and (B) the presence of blocking peptide.



Immunohistochemistry of KIRREL2 in human pancreas tissue with KIRREL2 antibody at 5 ug/ml.



Immunofluorescence of KIRREL2 in human pancreas tissue with KIRREL2 antibody at 20 ug/ml.

### Submit a product review to [Biocompare.com](https://www.biocompare.com)

Submit a review of this product to [Biocompare.com](https://www.biocompare.com) to receive a \$20 Amazon.com giftcard! Your reviews help your fellow scientists make the right decisions. Thank you for your contribution.



Anti-Kin of IRRE-like protein 2 KIRREL2 Antibody

For Research Use Only. Not for use in diagnostic procedures.