

## Anti-NaDC-1/SLC13A2 Antibody Picoband®

Catalog Number: A07831-1

### About SLC13A2

Solute carrier family 13 member 2 is a protein that is encoded in humans by the SLC13A2 gene. The protein encoded by this gene is a sodium-coupled citrate transporter that is regulated by the chaperone activity of cyclophilin b. The encoded protein may play a role in the formation of kidney stones.

### Overview

Product Name	Anti-NaDC-1/SLC13A2 Antibody Picoband®
Reactive Species	Human, Rat
Description	Boster Bio Anti-NaDC-1/SLC13A2 Antibody Picoband® catalog # A07831-1. Tested in ELISA, WB applications. This antibody reacts with Human, Rat. The brand Picoband indicates this is a premium antibody that guarantees superior quality, high affinity, and strong signals with minimal background in Western blot applications. Only our best-performing antibodies are designated as Picoband, ensuring unmatched performance.
Application	ELISA, WB
Clonality	Polyclonal
Formulation	Each vial contains 4 mg Trehalose, 0.9 mg NaCl, 0.2 mg Na <sub>2</sub> HPO <sub>4</sub> .
Storage Instructions	At -20°C for one year from date of receipt. After reconstitution, at 4°C for one month. It can also be aliquotted and stored frozen at -20°C for six months. Avoid repeated freezing and thawing.
Host	Rabbit
Uniprot ID	Q13183

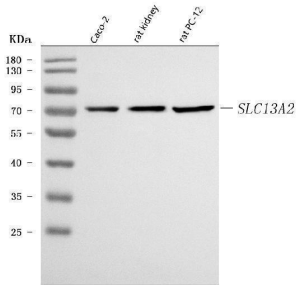
### Technical Details

Immunogen	E.coli-derived human NaDC-1/SLC13A2 recombinant protein (Position: A152-M417).
Recommended Detection Systems	Boster recommends Enhanced Chemiluminescent Kit with anti-Rabbit IgG (EK1002) for Western blot.
Cross Reactivity	No cross-reactivity with other proteins.
Isotype	Rabbit IgG
Form	Lyophilized
Concentration	Adding 0.2 ml of distilled water will yield a concentration of 500 µg/ml.
Purification	Immunogen affinity purified.

Suggested Dilutions

Western blot, 0.25-0.5 ug/ml, Human, Rat  
ELISA, 0.1-0.5 ug/ml, -

## Anti-NaDC-1/SLC13A2 Antibody Picoband® (A07831-1) Images



Western blot analysis of NaDC-1/SLC13A2 using anti-NaDC-1/SLC13A2 antibody (A07831-1). Electrophoresis was performed on a 5-20% SDS-PAGE gel at 70V (Stacking gel) / 90V (Resolving gel) for 2-3 hours. The sample well of each lane was loaded with 30 ug of sample under reducing conditions. Lane 1: human Caco-2 whole cell lysates, Lane 2: rat kidney tissue lysates, Lane 3: rat PC-12 whole cell lysates. After electrophoresis, proteins were transferred to a nitrocellulose membrane at 150 mA for 50-90 minutes. Blocked the membrane with 5% non-fat milk/TBS for 1.5 hour at RT. The membrane was incubated with rabbit anti-NaDC-1/SLC13A2 antigen affinity purified polyclonal antibody (Catalog # A07831-1) at 0.5 ug/mL overnight at 4°C, then washed with TBS-0.1%Tween 3 times with 5 minutes each and probed with a goat anti-rabbit IgG-HRP secondary antibody at a dilution of 1:5000 for 1.5 hour at RT. The signal is developed using an Enhanced Chemiluminescent detection (ECL) kit (Catalog # EK1002) with Tanon 5200 system. A specific band was detected for NaDC-1/SLC13A2 at approximately 70 kDa. The expected band size for NaDC-1/SLC13A2 is at 64 kDa.

### Submit a product review to [Biocompare.com](https://www.biocompare.com)

Submit a review of this product to [Biocompare.com](https://www.biocompare.com) to receive a \$20 Amazon.com giftcard! Your reviews help your fellow scientists make the right decisions. Thank you for your contribution.



Anti-NaDC-1/SLC13A2 Antibody

For Research Use Only. Not for use in diagnostic procedures.