

Anti-NALP7 NLRP7 Antibody

Catalog Number: A07838

About NLRP7

NOD proteins include the apoptosis regulator APAF1 (apoptotic protease activating factor 1) and mammalian NOD-LRR proteins. NALP7, also known as PYPAF3, a member of the related PYRIN-containing APAF1-like proteins (PYPAFs/NALPs) is thought to play a crucial role in cell proliferation. NALP7 has a C-terminal leucine-rich repeat (LRR) region, an N-terminal Pyrin domain (PYD) followed by a NACHT domain, and a NACHT-associated domain. It is expressed in numerous tissues including uterus and ovary, with low levels in heart and brain. NALP7 inhibits caspase-1-dependent interleukin-1beta secretion and is a feedback regulator of interleukin-1beta secretion. Defects in the NALP7 gene are known to cause the formation of a hydatidiform mole (HYDM) and reduce the growth of carcinoma cell lines.

Overview

Product Name	Anti-NALP7 NLRP7 Antibody
Reactive Species	Human
Description	Boster Bio Anti-NALP7 NLRP7 Antibody (Catalog # A07838). Tested in ELISA, WB, IHC-P, IF applications. This antibody reacts with Human.
Application	ELISA, IF, IHC-P, WB
Clonality	Polyclonal
Formulation	NALP7 Antibody is supplied in PBS containing 0.02% sodium azide.
Storage Instructions	Antibody can be stored at 4°C up to one year. Antibodies should not be exposed to prolonged high temperatures.
Host	Rabbit
Uniprot ID	Q8WX94

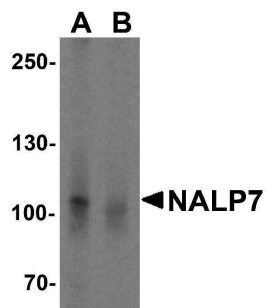
Technical Details

Immunogen	NALP7 antibody was raised against an 18 amino acid synthetic peptide near the amino terminus of human NALP7. The immunogen is located within amino acids 90 - 140 of NALP7.
Predicted Reactive Species	Bovine, Rat
Isotype	IgG
Form	Liquid
Concentration	1 mg/mL
Purification	NALP7 Antibody is affinity chromatography purified via peptide column.

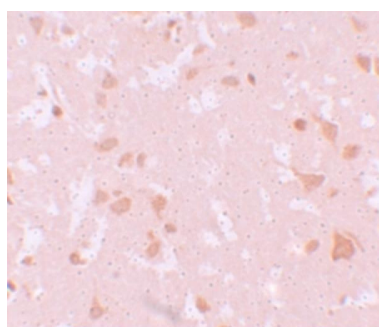
Suggested Dilutions

NALP7 antibody can be used for detection of NALP7 by Western blot at 1 ug/mL. Antibody can also be used for immunohistochemistry starting at 10 ug/mL. For immunofluorescence start at 20 ug/mL. Antibody validated: Western Blot in human samples; Immunohistochemistry in human samples and Immunofluorescence in human samples. All other applications and species not yet tested. Optimal dilutions for each application should be determined by the researcher.

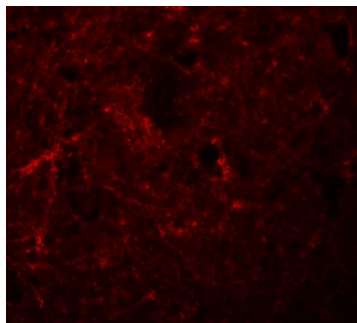
Anti-NALP7 NLRP7 Antibody (A07838) Images



Western blot analysis of NALP7 in K562 cell lysate with NALP7 antibody at 2 ug/mL in (A) the absence and (B) the presence of blocking peptide.



Immunohistochemistry of NALP7 in human brain tissue with NALP7 antibody at 10 ug/mL.



Immunofluorescence of NALP7 in human brain tissue with NALP7 antibody at 20 ug/mL.

Submit a product review to [Biocompare.com](https://www.biocompare.com)

Submit a review of this product to [Biocompare.com](https://www.biocompare.com) to receive a \$20 Amazon.com giftcard! Your reviews help your fellow scientists make the right decisions. Thank you for your contribution.



Anti-NALP7 NLRP7 Antibody

For Research Use Only. Not for use in diagnostic procedures.