

Anti-MYT1L Antibody

Catalog Number: A07880

About MYT1L

The myelin transcription factor 1 family, to which the myelin transcription factor 1-like protein (MYT1L) belongs, is expressed primarily in the developing central nervous system and recruits histone deacetylase (HDAC) to regulate neural transcription. Both MYT1L and the related protein MYT1 interact with SIN3B, a protein that mediates transcriptional repression by binding to HDACs, suggesting that the MYT1 family favor the silencing of genes during neural development. Recent studies suggest that polymorphisms of MYT1L may be associated with schizophrenia.

Overview

Product Name	Anti-MYT1L Antibody
Reactive Species	Human, Mouse, Rat
Description	Boster Bio Anti-MYT1L Antibody (Catalog # A07880). Tested in ELISA, WB, IF applications. This antibody reacts with Human, Mouse, Rat.
Application	ELISA, IF, WB
Clonality	Polyclonal
Formulation	MYT1L Antibody is supplied in PBS containing 0.02% sodium azide.
Storage Instructions	MYT1L antibody can be stored at 4°C for three months and -20°C, stable for up to one year. Avoid repeated freeze-thaw cycles. Antibodies should not be exposed to prolonged high temperatures.
Host	Rabbit
Uniprot ID	Q9UL68

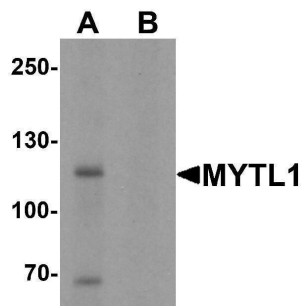
Technical Details

Immunogen	Rabbit polyclonal MYT1L antibody was raised against an 18 amino acid peptide near the carboxy terminus of human MYT1L. The immunogen is located within the last 50 amino acids of MYT1L.
Predicted Reactive Species	Bovine, Rat
Cross Reactivity	At least three isoforms are known to exist. This antibody will only recognize the two longest isoforms.
Isotype	IgG
Form	Liquid
Concentration	1 mg/mL
Purification	MYT1L Antibody is affinity chromatography purified via peptide column.

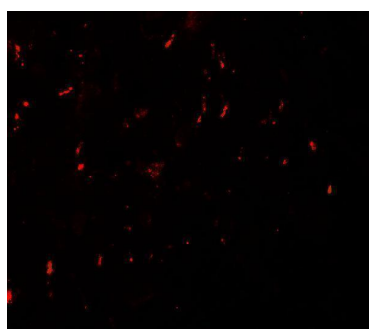
Suggested Dilutions

MYT1L antibody can be used for detection of MYT1L by Western blot at 1 - 2 ug/mL. For immunofluorescence start at 20 ug/mL.
Antibody validated: Western Blot in mouse samples and Immunofluorescence in human samples. All other applications and species not yet tested. Optimal dilutions for each application should be determined by the researcher.

Anti-MYT1L Antibody (A07880) Images



Western blot analysis of MYT1L in mouse brain tissue lysate with MYT1L antibody at 1 ug/mL in (A) the absence and (B) the presence of blocking peptide.



Immunofluorescence of MYT1L in human brain with MYT1L antibody at 20 ug/mL.

Submit a product review to [Biocompare.com](https://www.biocompare.com)

Submit a review of this product to [Biocompare.com](https://www.biocompare.com) to receive a \$20 Amazon.com giftcard! Your reviews help your fellow scientists make the right decisions. Thank you for your contribution.



Anti-MYT1L Antibody

For Research Use Only. Not for use in diagnostic procedures.