

Anti-FREM2 Antibody

Catalog Number: A07915

About FREM2

FREM2 is a member of the FRAS1-related extracellular matrix protein family and like FREM1, mutations in the FREM2 gene are associated with Fraser syndrome. FREM2 localizes to the basement membrane, forming a ternary complex that plays a role in epidermal-dermal interactions during morphogenetic processes and is thought to be required for maintaining the integrity of the skin epithelium and the differentiated state of renal epithelia. The FREM2 gene is one of several genes whose transcription is affected by TFAP2C, a transcription factor involved in mammary development, differentiation, and oncogenesis.

Overview

Product Name	Anti-FREM2 Antibody
Reactive Species	Human, Mouse
Description	Boster Bio Anti-FREM2 Antibody (Catalog # A07915). Tested in ELISA, WB, ICC, IF applications. This antibody reacts with Human, Mouse.
Application	ELISA, IF, ICC, WB
Clonality	Polyclonal
Formulation	FREM2 Antibody is supplied in PBS containing 0.02% sodium azide.
Storage Instructions	FREM2 antibody can be stored at 4°C for three months and -20°C, stable for up to one year. Avoid repeated freeze-thaw cycles. Antibodies should not be exposed to prolonged high temperatures.
Host	Rabbit
Uniprot ID	Q5SZK8

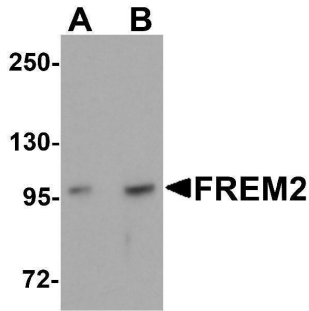
Technical Details

Immunogen	FREM2 antibody was raised against a 19 amino acid synthetic peptide near the center of human FREM2. The immunogen is located within amino acids 1920 - 1970 of FREM2.
Predicted Reactive Species	Bovine, Pig, Sheep
Isotype	IgG
Form	Liquid
Concentration	1 mg/mL
Purification	FREM2 Antibody is affinity chromatography purified via peptide column.
Suggested Dilutions	FREM2 antibody was raised against a 19 amino acid peptide near the center of human FREM2. Antibody can also be used for immunocytochemistry starting at 20 ug/mL. For immunofluorescence

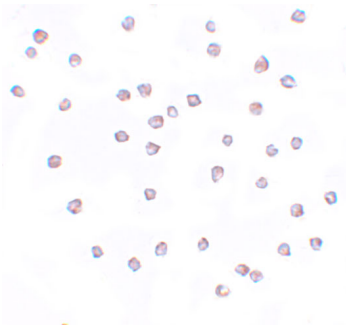
start at 20 ug/mL.

Antibody validated: Western Blot in mouse samples; Immunocytochemistry in mouse samples and Immunofluorescence in mouse samples. All other applications and species not yet tested. Optimal dilutions for each application should be determined by the researcher.

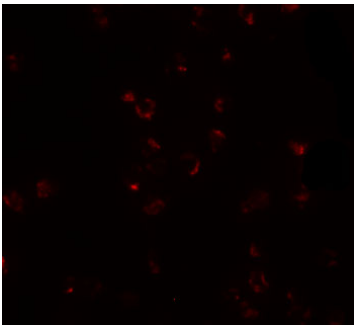
Anti-FREM2 Antibody (A07915) Images



Western blot analysis of FREM2 in A-20 cell lysate with FREM2 antibody at (A) 0.5 and (B) 1ug/mL.



Immunocytochemistry of FREM2 in A-20 cells with FREM2 antibody at 20 ug/mL.



Immunofluorescence of FREM2 in A20 cells with FREM2 antibody at 20 ug/mL.

Submit a product review to [Biocompare.com](https://www.biocompare.com)

Submit a review of this product to [Biocompare.com](https://www.biocompare.com) to receive a \$20 Amazon.com giftcard! Your reviews help your fellow scientists make the right decisions. Thank you for your contribution.



Anti-FREM2 Antibody

For Research Use Only. Not for use in diagnostic procedures.