

Anti-CAPS2 CADPS2 Antibody

Catalog Number: A07920

About CADPS2

CAPS2 and the related protein CAPS1 encode novel neural/endocrine-specific cytosolic and peripheral membrane proteins. Both are essential components of the synaptic vesicle priming machinery and are required for the Ca²⁺-regulated exocytosis of secretory vesicles; CAPS-deficient neurons contain no or very few fusion competent synaptic vesicles, causing a selective impairment of fast phasic transmitter release. Like CAPS1, numerous isoforms of CAPS2 are known to exist. These isoforms show distinct expression patterns in the brain. For example, CAPS2b showed high expression in the developing cerebellum. Furthermore, one version of CAPS2 mRNA that lacks exon 3 is detected in some autistic patients, suggesting that the differential expression pattern of CAPS2 is involved in neuronal development.

Overview

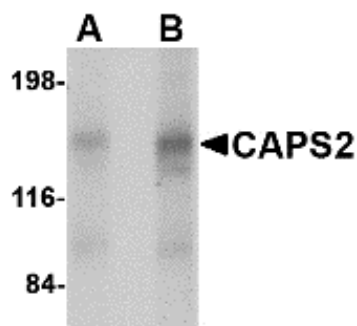
| | |
|----------------------|--|
| Product Name | Anti-CAPS2 CADPS2 Antibody |
| Reactive Species | Human, Mouse, Rat |
| Description | Boster Bio Anti-CAPS2 CADPS2 Antibody (Catalog # A07920). Tested in ELISA, WB, IHC-P, IF applications. This antibody reacts with Human, Mouse, Rat. |
| Application | ELISA, IF, IHC-P, WB |
| Clonality | Polyclonal |
| Formulation | CAPS2 Antibody is supplied in PBS containing 0.02% sodium azide. |
| Storage Instructions | CAPS2 antibody can be stored at 4°C for three months and -20°C, stable for up to one year. Avoid repeated freeze-thaw cycles. Antibodies should not be exposed to prolonged high temperatures. |
| Host | Rabbit |
| Uniprot ID | Q86UW7 |

Technical Details

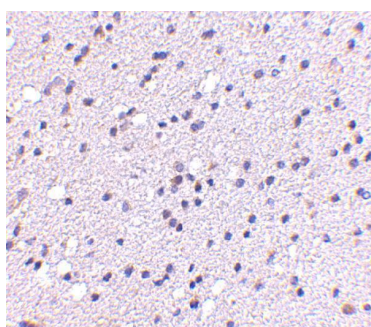
| | |
|----------------------------|---|
| Immunogen | CAPS2 antibody was raised against a 19 amino acid synthetic peptide near the center of the human CAPS2. The immunogen is located within amino acids 510 - 560 of CAPS2. |
| Predicted Reactive Species | Bovine, Pig, Sheep |
| Cross Reactivity | Multiple isoforms of CAPS2 are known to exist. This CAPS2 antibody is predicted to be specific to CAPS2 and not recognize CAPS1. |
| Isotype | IgG |
| Form | Liquid |
| Concentration | 1 mg/mL |

| | |
|---------------------|---|
| Purification | CAPS2 Antibody is affinity chromatography purified via peptide column. |
| Suggested Dilutions | <p>CAPS2 antibody can be used for detection of CAPS2 by Western blot at 0.5 - 1 ug/mL. Antibody can also be used for immunohistochemistry starting at 5 ug/mL. For immunofluorescence start at 20 ug/mL.</p> <p>Antibody validated: Western Blot in human samples; Immunohistochemistry in human samples and Immunofluorescence in human samples. All other applications and species not yet tested. Optimal dilutions for each application should be determined by the researcher.</p> |

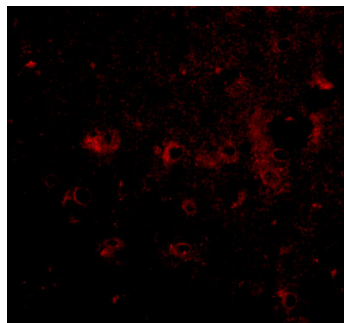
Anti-CAPS2 CADPS2 Antibody (A07920) Images



Western blot analysis of CAPS2 in human brain tissue lysate with CAPS2 antibody at (A) 0.5 and (B) 1 ug/mL.



Immunohistochemistry of CAPS2 in human brain with CAPS2 antibody at 5 ug/mL.



Immunofluorescence of CAPS2 in Human Brain tissue with CAPS2 antibody at 20 ug/mL.

Submit a product review to [Biocompare.com](https://www.biocompare.com)

Submit a review of this product to [Biocompare.com](https://www.biocompare.com) to receive a \$20 Amazon.com giftcard! Your reviews help your fellow scientists make the right decisions. Thank you for your contribution.



Anti-CAPS2 CADPS2 Antibody

For Research Use Only. Not for use in diagnostic procedures.