

Anti-SCUBE1 Antibody

Catalog Number: A07935

About SCUBE1

SCUBE1 is an EGF-related protein with a CUB (C1s-like) domain that is expressed primarily in the developing gonad, nervous system, somites, surface ectoderm and limb buds. The N-terminal EGF-like repeats of SCUBE1 participate in the formation of adhesions in a Ca²⁺-dependent fashion. In contrast, the C-terminal cysteine-rich motifs and CUB domain can directly bind and antagonize bone morphogenic protein activity; genetic ablation of this region resulted in brain malformation in mice embryos, suggesting SCUBE1 plays a role in brain morphogenesis. SCUBE1 has also been implicated in early craniofacial development in mice.

Overview

Product Name	Anti-SCUBE1 Antibody
Reactive Species	Human
Description	Boster Bio Anti-SCUBE1 Antibody (Catalog # A07935). Tested in ELISA, WB, ICC, IF applications. This antibody reacts with Human.
Application	ELISA, IF, ICC, WB
Clonality	Polyclonal
Formulation	SCUBE1 Antibody is supplied in PBS containing 0.02% sodium azide.
Storage Instructions	SCUBE1 antibody can be stored at 4°C for three months and -20°C, stable for up to one year. Avoid repeated freeze-thaw cycles. Antibodies should not be exposed to prolonged high temperatures.
Host	Rabbit
Uniprot ID	Q8IWY4

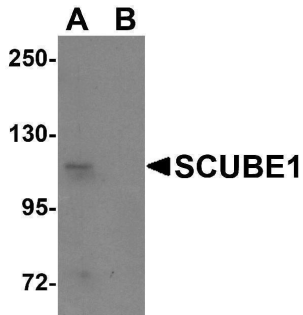
Technical Details

Immunogen	SCUBE1 antibody was raised against a 14 amino acid synthetic peptide near the center of human SCUBE1. The immunogen is located within amino acids 460 - 510 of SCUBE1.
Predicted Reactive Species	Mouse
Isotype	IgG
Form	Liquid
Concentration	1 mg/mL
Purification	SCUBE1 Antibody is affinity chromatography purified via peptide column.
Suggested Dilutions	SCUBE1 antibody can be used for detection of SCUBE1 by Western blot at 1 ug/mL. Antibody can also be used for immunocytochemistry starting at 20 ug/mL. For immunofluorescence start at 20

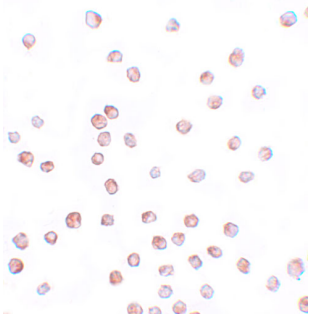
ug/mL.

Antibody validated: Western Blot in human samples; Immunocytochemistry in human samples and Immunofluorescence in human samples. All other applications and species not yet tested. Optimal dilutions for each application should be determined by the researcher.

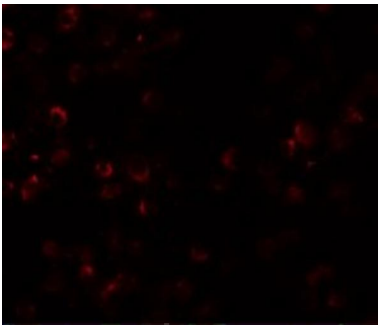
Anti-SCUBE1 Antibody (A07935) Images



Western blot analysis of SCUBE1 in Daudi cell lysate with SCUBE1 antibody at 1 ug/mL in (A) the absence and (B) the presence of blocking peptide.



Immunocytochemistry of SCUBE1 in Daudi cells with SCUBE1 antibody at 20 ug/mL.



Immunofluorescence of SCUBE1 in Daudi cells with SCUBE1 antibody at 20 ug/mL.

Submit a product review to [Biocompare.com](https://www.biocompare.com)

Submit a review of this product to [Biocompare.com](https://www.biocompare.com) to receive a \$20 Amazon.com giftcard! Your reviews help your fellow scientists make the right decisions. Thank you for your contribution.



Anti-SCUBE1 Antibody

For Research Use Only. Not for use in diagnostic procedures.