

## Anti-UMP-CMP Kinase (E36) CMPK1 Antibody

Catalog Number: A07962-1

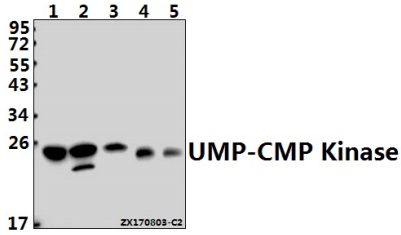
### Overview

Product Name	Anti-UMP-CMP Kinase (E36) CMPK1 Antibody
Reactive Species	Human, Mouse, Rat
Description	Boster Bio Anti-UMP-CMP Kinase (E36) CMPK1 Antibody catalog # A07962-1. Tested in WB,IHC,IP applications. This antibody reacts with Human,Mouse,Rat.
Application	IP, IHC, WB
Clonality	Polyclonal
Formulation	Rabbit IgG, 1mg/ml in PBS with 0.02% sodium azide, 50% glycerol, pH7.2
Storage Instructions	Store at -20°C for one year. For short term storage and frequent use, store at 4°C for up to one month. Avoid repeated freeze-thaw cycles.
Host	Rabbit
Uniprot ID	P30085

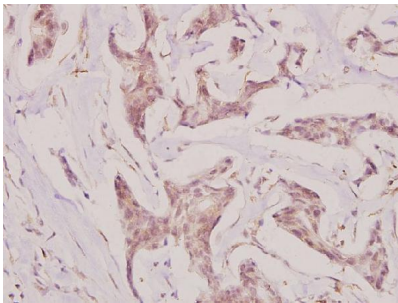
### Technical Details

Immunogen	Synthetic peptide, corresponding to the N-terminal of Human UMP-CMP Kinase.
Isotype	IgG
Form	Liquid
Concentration	1 mg/ml
Purification	The antibody was affinity-purified from rabbit antiserum by affinity-chromatography using epitope-specific immunogen and the purity is > 95% (by SDS-PAGE).
Suggested Dilutions	WB: 1:500-1:1000 IHC: 1:50-1:200 IP: 1:10-1:100

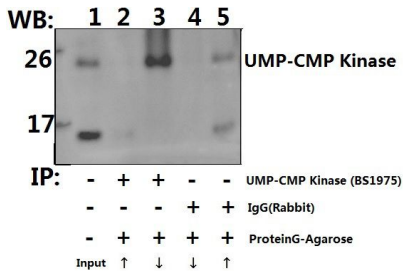
## Anti-UMP-CMP Kinase (E36) CMPK1 Antibody (A07962-1) Images



Western blot (WB) analysis of UMP-CMP Kinase (E36) pAb at 1:1000 dilution Lane1:Hela whole cell lysate(40ug) Lane2:H9C2 whole cell lysate(40ug) Lane3:MEF whole cell lysate(40ug) Lane4:A549 whole cell lysate(40ug) Lane5:HEK293T whole cell lysate(40ug)



Immunohistochemistry (IHC) analyzes of UMP-CMP Kinase (E36) pAb in paraffin-embedded human breast carcinoma tissue at 1:100.



Immunoprecipitation of HEK293T cell lysate using UMP-CMP Kinase (E36) pAb (Sepharose Bead Conjugate) #BD0048(lane 2 and lane 3) and Nonspecific IgG Control (Sepharose Bead Conjugate) #BD0048 (lane 4 and lane 5). Lane 1 is 30% input. The western blot was probed using UMP-CMP Kinase (E36). "↑" [ ]supernatant [ ]; "↓" (deposition [ ])

## Submit a product review to Biocompare.com

Submit a review of this product to Biocompare.com to receive a \$20 Amazon.com giftcard! Your reviews help your fellow scientists make the right decisions. Thank you for your contribution.



Anti-UMP-CMP Kinase (E36) CMPK1 Antibody

For Research Use Only. Not for use in diagnostic procedures.