

Anti-A-kinase anchor protein 11 AKAP11 Antibody

Catalog Number: A07963

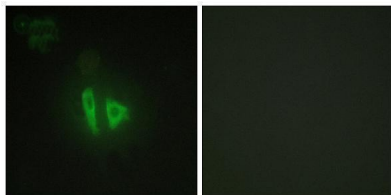
Overview

Product Name	Anti-A-kinase anchor protein 11 AKAP11 Antibody
Reactive Species	Human, Mouse, Rat
Description	Boster Bio Anti-A-kinase anchor protein 11 AKAP11 Antibody (Catalog# A07963). Tested in IHC, ICC, IF, ELISA applications. This antibody reacts with Human, Mouse, Rat.
Application	ELISA, IF, IHC, ICC
Clonality	Polyclonal
Formulation	PBS containing 50% glycerol, 0.5% stabilizing protein and 0.02% sodium azide. This antibody is supplied in a stabilized formulation. Compatibility with conjugation reactions depends on the chemistry of the conjugation method used. For conjugation methods that are not compatible with the stabilizing components present in this formulation, a carrier-free antibody format is required.
Storage Instructions	Store at -20°C for one year. For short-term storage and frequent use, store at 4°C for up to one month. Avoid repeated freeze-thaw cycles.
Host	Rabbit
Uniprot ID	Q9UKA4

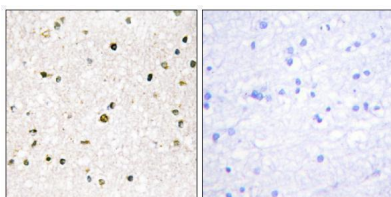
Technical Details

Immunogen	A peptide derived from human AKAP11. Immunogen sequence location: 1761-1810
Isotype	Rabbit IgG
Form	Liquid
Concentration	0.5-1mg/ml, actual concentration vary by lot. Use suggested dilution ratio to decide dilution procedure.
Purification	The antibody was purified from rabbit antiserum by affinity-chromatography using immunogen.
Suggested Dilutions	IHC 1:100 - 1:300. ICC/IF 1:200 - 1:1000. ELISA: 1:10000. Not yet tested in other applications.

Anti-A-kinase anchor protein 11 AKAP11 Antibody (A07963) Images



Immunofluorescence analysis of HepG2 cells, using AKAP11 Antibody. The picture on the right is blocked with the synthesized peptide.



Immunohistochemistry analysis of paraffin-embedded human brain tissue, using AKAP11 Antibody. The picture on the right is blocked with the synthesized peptide.

Submit a product review to [Biocompare.com](https://www.biocompare.com)

Submit a review of this product to [Biocompare.com](https://www.biocompare.com) to receive a \$20 Amazon.com giftcard! Your reviews help your fellow scientists make the right decisions. Thank you for your contribution.



Anti-A-kinase anchor protein 11 AKAP11 Antibody

For Research Use Only. Not for use in diagnostic procedures.