

Anti-LPAAT-theta GPAT3 Antibody

Catalog Number: A07965-1

About GPAT3

Catalyzes the phosphorylation of pyrimidine nucleoside monophosphates at the expense of ATP. Plays an important role in de novo pyrimidine nucleotide biosynthesis. Has preference for UMP and CMP as phosphate acceptors. Also displays broad nucleoside diphosphate kinase activity.

Van Rompay A.R., Mol. Pharmacol. 56:562-569(1999).

Pearman A.T., Life Sci. 69:2361-2370(2001).

Liou J.-Y., Cancer Res. 62:1624-1631(2002).

Overview

Product Name	Anti-LPAAT-theta GPAT3 Antibody
Reactive Species	Human, Mouse, Rat
Description	Boster Bio Anti-LPAAT-theta GPAT3 Antibody catalog # A07965-1. Tested in ELISA, IF, IHC, WB applications. This antibody reacts with Human, Mouse, Rat.
Application	ELISA, IF, IHC, WB
Clonality	Polyclonal
Formulation	Liquid in PBS containing 50% glycerol, 0.5% BSA and 0.02% sodium azide.
Storage Instructions	Store at -20°C for one year. For short term storage and frequent use, store at 4°C for up to one month. Avoid repeated freeze-thaw cycles.
Host	Rabbit
Uniprot ID	Q53EU6

Technical Details

Immunogen	Synthesized peptide derived from human LPAAT-theta
Predicted Reactive Species	Chimpanzee, Drosophila, Macaque
Isotype	IgG
Form	Liquid
Concentration	1 mg/ml
Purification	The antibody was affinity-purified from rabbit antiserum by affinity-chromatography using epitope-specific immunogen.

Suggested Dilutions

Dilute the sample so that the expected range of concentrations fall within the detection range of this kit.

If the expected range of concentration is unknown, a pilot test should be conducted to decide the optimal dilution ratio for your samples.

Some PubMed article(s) citing the expression level of this target are as follows:

Boster Bio's internal QC testing used:

WB 1:500-1:2000

IHC 1:100-1:300

IF 1:200-1:1000

ELISA 1:10000

Anti-LPAAT-theta GPAT3 Antibody (A07965-1) Images

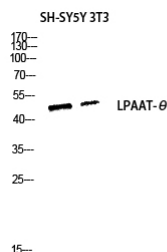


Figure 1. Western blotting validation for Anti-LPAAT-theta GPAT3 Antibody A07965-1

Western Blot (WB) analysis of SH-SY5Y 3T3 lysis using LPAAT-theta antibody. Electrophoresis was performed on a SDS-PAGE gel. To determine SDS-PAGE gel concentration

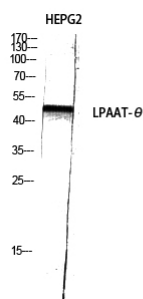


Figure 2. Western blotting validation for Anti-LPAAT-theta GPAT3 Antibody A07965-1

Western Blot (WB) analysis of HepG2 using LPAAT-theta polyclonal antibody. Electrophoresis was performed on a SDS-PAGE gel. To determine SDS-PAGE gel concentration

Submit a product review to Biocompare.com

Submit a review of this product to Biocompare.com to receive a \$20 Amazon.com giftcard! Your reviews help your fellow scientists make the right decisions. Thank you for your contribution.



Anti-LPAAT-theta GPAT3 Antibody