

## Anti-BAMBI Antibody

Catalog Number: A07983

### About BAMBI

BAMBI (BMP and activin membrane-bound inhibitor homolog, NMA) is a membrane spanning glycoprotein that acts as a negative regulator of TGF-beta signaling during development (1). BAMBI transcription regulation is under the influence of beta-catenin, BMP, smad3 and smad4 (2,3). BAMBI expression can increase in colorectal and hepatocellular carcinomas relative to non-cancerous tissues (4). BAMBI is expressed at high levels during odontogenesis. BAMBI is coexpressed with Bmp-4 during early *Xenopus* embryogenesis and can be detected in poorly metastatic human melanoma cell lines (5).

### Overview

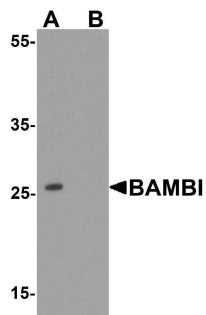
Product Name	Anti-BAMBI Antibody
Reactive Species	Human, Mouse, Rat
Description	Boster Bio Anti-BAMBI Antibody (Catalog # A07983). Tested in ELISA, WB, IHC-P, IF applications. This antibody reacts with Human, Mouse, Rat.
Application	ELISA, IF, IHC-P, WB
Clonality	Polyclonal
Formulation	BAMBI antibody is supplied in PBS containing 0.02% sodium azide.
Storage Instructions	BAMBI antibody can be stored at 4°C for three months and -20°C, stable for up to one year.
Host	Rabbit
Uniprot ID	Q13145

### Technical Details

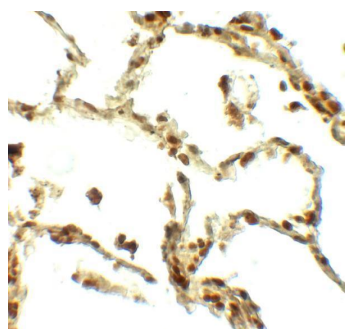
Immunogen	BAMBI antibody was raised against a 17 amino acid peptide near the center of human BAMBI. The immunogen is located within amino acids 100 - 150 of BAMBI.
Predicted Reactive Species	Sheep
Cross Reactivity	BAMBI antibody is human, mouse and rat reactive.
Isotype	IgG
Form	Liquid
Concentration	1 mg/mL
Purification	BAMBI antibody is affinity chromatography purified via peptide column.
Suggested Dilutions	BAMBI antibody can be used for detection of BAMBI by Western blot at 1 - 2 ug/ml. Antibody can

also be used for Immunohistochemistry starting at 5 ug/mL. For immunofluorescence start at 20 ug/mL.  
Antibody validated: Western Blot in mouse samples; Immunohistochemistry in human samples and Immunofluorescence in human samples. All other applications and species not yet tested. Optimal dilutions for each application should be determined by the researcher.

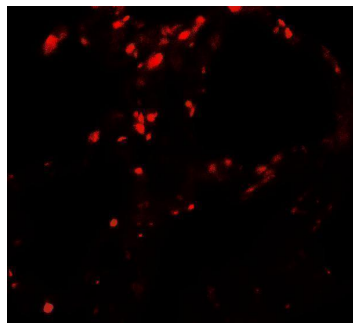
## Anti-BAMBI Antibody (A07983) Images



Western blot analysis of BAMBI in mouse lung tissue lysate with BAMBI antibody at 1 ug/ml in (A) the absence and (B) the presence of blocking peptide.



Immunohistochemistry of BAMBI in human lung tissue with BAMBI antibody at 5 ug/ml.



Immunofluorescence of BAMBI in human lung tissue with BAMBI antibody at 20 ug/ml.

### Submit a product review to [Biocompare.com](https://www.biocompare.com)

Submit a review of this product to [Biocompare.com](https://www.biocompare.com) to receive a \$20 Amazon.com giftcard! Your reviews help your fellow scientists make the right decisions. Thank you for your contribution.



Anti-BAMBI Antibody

For Research Use Only. Not for use in diagnostic procedures.