

## Anti-Epsin-2 EPN2 Antibody

Catalog Number: A08001

### About EPN2

Plays a role in the formation of clathrin-coated invaginations and endocytosis.

Rosenthal J.A., J. Biol. Chem. 274:33959-33965(1999).

Kikuno R., DNA Res. 6:197-205(1999).

Ota T., Nat. Genet. 36:40-45(2004).

### Overview

Product Name	Anti-Epsin-2 EPN2 Antibody
Reactive Species	Human, Mouse, Rat
Description	Boster Bio Anti-Epsin-2 EPN2 Antibody (Catalog # A08001). Tested in WB applications. This antibody reacts with Human, Mouse, Rat.
Application	WB
Clonality	Polyclonal
Formulation	Rabbit IgG in phosphate buffered saline (without Mg <sup>2+</sup> and Ca <sup>2+</sup> ), pH 7.4, 150mM NaCl, 0.02% sodium azide and 50% glycerol.
Storage Instructions	Store at -20°C for one year. For short term storage and frequent use, store at 4°C for up to one month. Avoid repeated freeze-thaw cycles.
Host	Rabbit
Uniprot ID	O95208

### Technical Details

Immunogen	Synthesized peptide derived from internal of human EPN2.
Predicted Reactive Species	Chimpanzee, Drosophila, Macaque
Isotype	IgG
Form	Liquid
Concentration	1 mg/ml
Purification	The antibody was affinity-purified from rabbit antiserum by affinity-chromatography using epitope-specific immunogen.
Suggested Dilutions	Dilute the sample so that the expected range of concentrations fall within the detection range of this

kit.

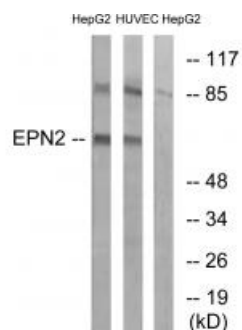
If the expected range of concentration is unknown, a pilot test should be conducted to decide the optimal dilution ratio for your samples.

Some PubMed article(s) citing the expression level of this target are as follows:

Boster Bio's internal QC testing used:

Western blotting: 1:500~1:3000

## Anti-Epsin-2 EPN2 Antibody (A08001) Images



Western blot analysis of extracts from HepG2 cells and HUVEC cells, using EPN2 antibody A08001.

## Submit a product review to Biocompare.com

Submit a review of this product to Biocompare.com to receive a \$20 Amazon.com giftcard! Your reviews help your fellow scientists make the right decisions. Thank you for your contribution.



Anti-Epsin-2 EPN2 Antibody