

Anti-Epsin 2 EPN2 Antibody

Catalog Number: A08001-1

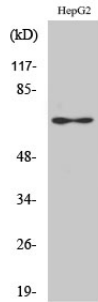
Overview

Product Name	Anti-Epsin 2 EPN2 Antibody
Reactive Species	Human, Mouse, Rat
Description	Boster Bio Anti-Epsin 2 EPN2 Antibody catalog # A08001-1. Tested in ELISA, IHC, WB applications. This antibody reacts with Human, Mouse, Rat.
Application	ELISA, IF, IHC, WB
Clonality	Polyclonal
Formulation	Liquid in PBS containing 50% glycerol, 0.5% stabilizing protein and 0.02% sodium azide. This antibody is supplied in a stabilized formulation. Compatibility with conjugation reactions depends on the chemistry of the conjugation method used. For conjugation methods that are not compatible with the stabilizing components present in this formulation, a carrier-free antibody format is required.
Storage Instructions	Store at -20°C for one year. For short term storage and frequent use, store at 4°C for up to one month. Avoid repeated freeze-thaw cycles.
Host	Rabbit
Uniprot ID	O95208

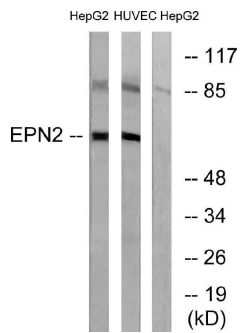
Technical Details

Immunogen	The antiserum was produced against synthesized peptide derived from human EPN2. AA range:271-320
Isotype	IgG
Form	Liquid
Concentration	1 mg/ml
Purification	The antibody was affinity-purified from rabbit antiserum by affinity-chromatography using epitope-specific immunogen.
Suggested Dilutions	WB 1:500-1:2000 IHC 1:100-1:300 ELISA 1:20000 IF 1:50-200

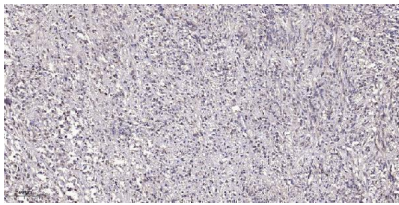
Anti-Epsin 2 EPN2 Antibody (A08001-1) Images



Western Blot analysis of various cells using Epsin 2 Polyclonal Antibody diluted at 1:1000



Western blot analysis of lysates from HepG2 and HUVEC cells, using EPN2 Antibody. The lane on the right is blocked with the synthesized peptide.



Immunohistochemical analysis of paraffin-embedded human small intestinal carcinoma tissue. 1, primary Antibody was diluted at 1:200 (4° overnight). 2, Sodium citrate pH 6.0 was used for antigen retrieval (>98°C, 20min). 3, Secondary antibody was diluted at 1:200

Submit a product review to Biocompare.com

Submit a review of this product to Biocompare.com to receive a \$20 Amazon.com giftcard! Your reviews help your fellow scientists make the right decisions. Thank you for your contribution.



Anti-Epsin 2 EPN2 Antibody

For Research Use Only. Not for use in diagnostic procedures.